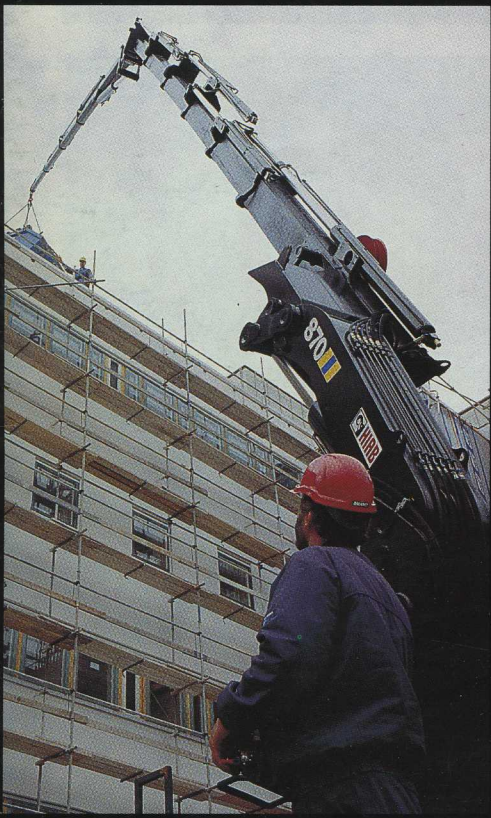
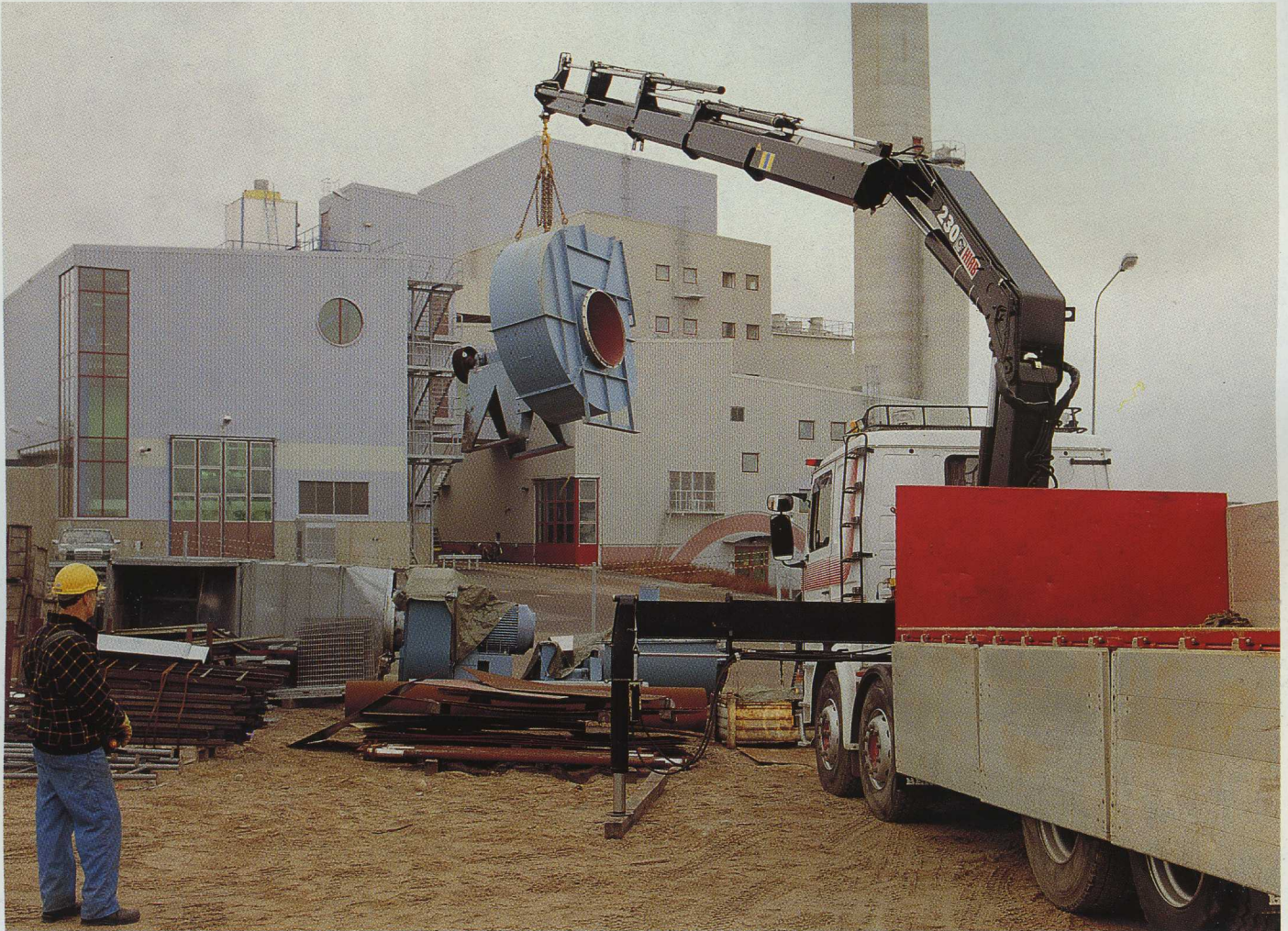


HIAB



METHOD

No. 46



QUALITY, PERFORMANCE, AND SAFETY

Hiab recently launched three new high-capacity cranes which meet the most exacting standard for quality, performance and safety. What's more, two models, the HIAB 230 and HIAB 280, are equipped

with the new HIAB Valve 91. Plus Hiab's revolutionary computerised safety system, SPACE Control and HIAB CombiDrive, the world's most advanced remote control for truck mounted cranes.



Page 4



The HIAB 081

Page 5



Applications Around The World

Page 6



COMPACT, LIGHTWEIGHT CONSTRUCTION

The new HIAB 027 is an extremely reliable crane that combines excellent reach with a compact, lightweight construction. It also has many features normally

only found on much larger cranes and was specially designed so it can use biodegradable, vegetable-based oil.

Page 5



Hiab News

Page 15

HIAB METHOD

No. 46 • July 1994

HIAB Method is published annually by Hiab AB, Hudiksvall, Sweden.
Publisher: Göran Wiklund
Editor: Terence Prout
Editorial Assistant: lia Berglund
Printing: WR Graphics Oy

Some equipment featured in this publication may be optional, and a number of applications may require the approval of local authorities.

READER ENQUIRIES

For further information about any products, accessories, or applications in this magazine, simply complete the enclosed card and encircle the appropriate Reader Enquiry Service number. If this card is missing, or additional information is required, please contact your local Hiab distributor, or write to:

HIAB AB,
842 83 Hudiksvall
SWEDEN



Both the HIAB 230 and the HIAB 280 are equipped with SPACE Control, HIAB's revolutionary control and safety system.

HIAB LAUNCHES THREE HIGH-CAPACITY MODELS THAT FEATURE THE ABSOLUTE LATEST CRANE TECHNOLOGY

HIAB recently launched three exceptionally powerful cranes with lifting capacities ranging from 21 to 28 tonne-metres.

And although they all feature advanced boom systems that can be fitted with up to five hydraulic extensions, by using the latest computer aided design technology and high-tensile steel their weight has been kept to an absolute minimum.

The result is increased payload capacity and greater productivity.

More important, to provide operator's with a more efficient working environment, these cranes also feature the most up-to-date crane technology available.

The extension cylinders, for example, have been redesigned to give better extension speed plus a boom system that is entirely free from hanging hoses.

And large, adjustable slide pads allow a more stable extension.

Two models, the 23 tonne-metre capacity HIAB 230 and the 28 tonne-metre HIAB 280, are also equipped with Hiab's revolutionary control and safety system, SPACE Control.

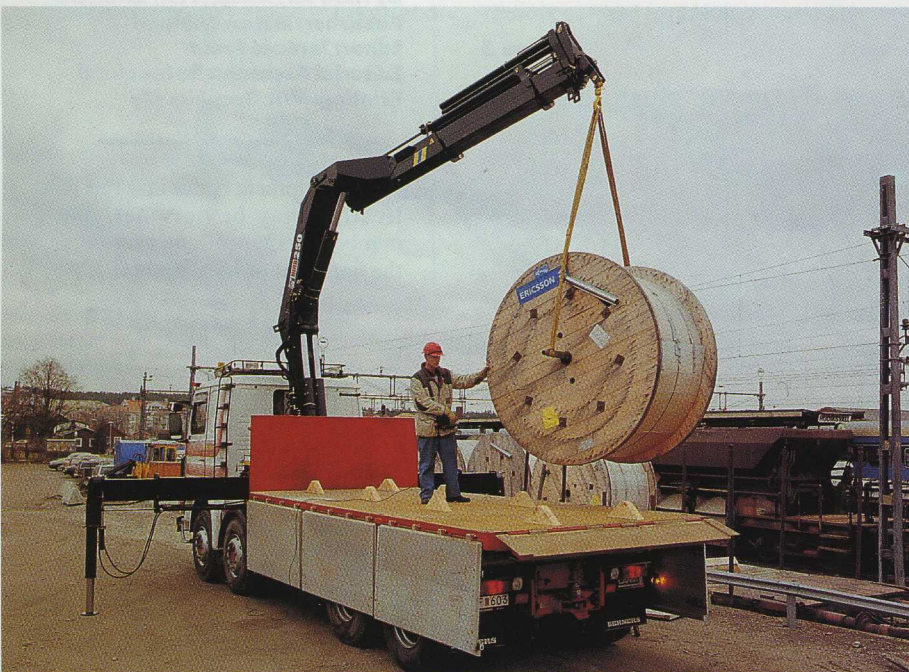
SPACE Control offers among other things an overload protection function that constantly monitors the position and movements of the crane, a load operated speed function that increases lifting capacity by 10 to 15%, and a built-in diagnostic system.

In addition, these cranes feature a new electronic link that dramatically improves lifting performance at high boom elevation.

Plus the HIAB Valve 91, a load sensing and pressure compensated valve that operates independently of the pump flow, the load and other crane functions that are running simultaneously.

And a new load-holding valve, HIAB LHV 91, which virtually eliminates jerky lowering movements and significantly reduces noise levels.

Not to mention HIAB CombiDrive, the world's most advanced remote control system for truck cranes.



The HIAB 250 can be fitted with up to five hydraulic extensions.

No. 1

LIGHTEST CRANE IN IT'S CLASS

With manual boom extensions, the new HIAB 027 has a maximum outreach of almost six metres.

Yet, it is the lightest crane in it's class and requires a mere 430 mm of mounting space.

For extra compact truck installations or stationary applications, an "L" base version is also available.

This tough, compact crane also has a six-function control valve, powerful new extension cylinders and support legs with spring loaded locking devices and secondary safety catches.

Other features include built-in hose rupture valves on the inner and outer boom cylinders, plus a slewing system that's enclosed in a cast steel base and sealed with rubber for added protection.

And to meet increasingly demanding environmental legislation around the world, the HIAB 027's hydraulic system has been specially designed so it can use bio-degradable vegetable oil.

No. 2



The HIAB 027 has a maximum hydraulic reach of 4.7 metres.



This heavy-duty crane is designed for tough jobs.

HIAB 081 CAN HANDLE IT

Got a tough job?

Don't worry, the HIAB 081 can handle it.

Because this unique, 8 tonne-metre, heavy duty crane was specially designed for demanding tasks like grapple work and clamshell duty.

It features a tailor-made hydraulic system for increased productivity. And large, easily adjustable slide pads to guarantee exact movement of the boom tip, something that's particularly important when working with a clamshell bucket.

There's also numerous other things designed to improve performance and operation reliability like the internationally acclaimed "JIC" coupling system.

No. 3

ICELAND

HIAB 330 HAS AN ENORMOUS OUTREACH

Thorsteinn Theodorsson Transport in Mosfellsbae, Island recently had a HIAB 330-5 equipped with a HIAB JIB 90 and a two man personnel basket mounted on a new Scania 340.

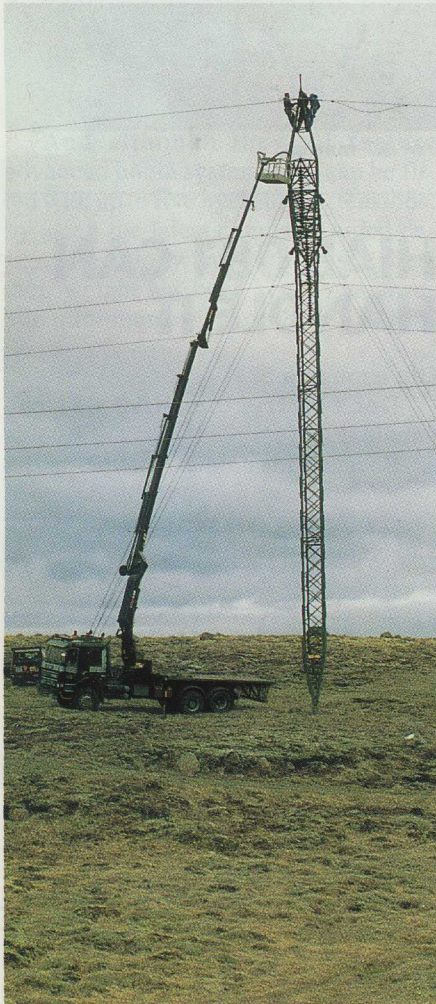
The crane, which will be used primarily for inspecting and repairing power lines for the government owned Island Electricity Company, has a maximum hydraulic reach of 13.5 metres.

But with a HIAB JIB 90 and manual boom extensions the crane's reach can be extended to over 25 metres.

That means much better line access.

The HIAB 330 also features a unique electronic link which increases lifting capacity at high boom elevation and the new HIAB Valve 91.

No. 4



With a jib and manual extensions the HIAB 330-5 has a reach of over 25 metres.

GERMANY



The HIAB 025 has a boom that reaches to almost 5 metres above the truck platform.

HIAB HELPS PROVIDE BREATH OF FRESH AIR IN HAMBURG

Hamburg has the oldest sewer system on the European continent.

It consists of a labyrinth of tunnels, some as much as 140 years old, that stretch over 5000 km under the city and handle some 210 million cubic metres of waste per year.

But because of it's age, a lot of work is required to maintain the system – a job that can be dangerous if proper precautions aren't taken.

Gases that build up during the decaying process, for instance, can cause explosions.

And illegally dumped chemicals pose a serious health hazard for maintenance staff, especially since they often have to work underground for several hours at a time.

To reduce the risk of accidents, and improve the quality of the air in the sewer system, large ventilators are used, ventilators that are put in place with the help of a fleet of trucks mounted with HIAB 025s.

The entire operation can be performed by just one man using the HIAB 025, which has a lifting capacity of 2.5 tonne-metre and a boom that reaches to almost 5 metres above the truck platform.

The truck is parked close to a shaft leading to the sewer, the manhole cover

is removed and the bottom part of the ventilator, which hangs from chains is placed over the opening using the crane's winch.

Then the top of the ventilator is placed in position using the same method.

The ventilators are in use 24 hours a day, so these units are kept busy working around clock.

But that's no problem for the HIAB 025, a real workhorse built to provide maximum performance hour, after hour, day, after day.

And in the unlikely event something does go wrong, the staff at the main depot of Hamburg's Sewer Department know it won't take long to fix.

Because Heinrich Schomäcker, Germany's oldest HIAB dealer, is literally just around the corner.

No. 5



Ameritech uses their HIAB 260 AW almost exclusively for handling telephone cable reels.

THE POWERFUL, YET LIGHTWEIGHT HIAB 260 IS ONE OF THE MOST POPULAR CRANES SOLD IN THE USA TODAY

The 26 tonne-metre capacity HIAB 260 is one of the most popular hydraulic truck cranes in the United States.

Especially with utility companies like Ameritech which provides telecommunications services for customer's in Ohio, Michigan, Indiana, Illinois and Wisconsin.

It's available with four different

boom systems providing a maximum hydraulic reach that ranges from 6.3 metres to 12.1 metres.

And if needed, manual boom extensions and a jib can be added to increase the crane's reach even further.

More important, the HIAB 260 has the brute strength to lift up to 10 tonnes with the inner hook attachment.

Yet even it's heaviest version, this crane weighs just over 3,500 kg – and that includes top seat controls and 4.7 metre spread support legs.

To retrieve empty cable reels from spots that would otherwise be difficult to reach, Ameritech has also had their crane equipped with a 2,700 kg winch.

No. 6

G R E A T B R I T A I N

GREAT FOR A GAS COMPANY

Utility Companies all over the world are looking for new ways to reduce costs.

And British Gas Southern is no exception.

Last year, for example, they took delivery of six HIAB 125-3s to improve the efficiency of their pipeline fleet.

Now these extremely versatile cranes are being used for everything from installing piping for new gas lines to handling portable huts which are used to house regulators and a variety of other equipment on site.

No. 7



The versatile HIAB 125-3 can lift over 6,000 kg at a reach of 1.8 metres.

USA

NEW HIAB 215 IS A 21.5 TONNE-METRE CAPACITY CRANE WITH A HYDRAULIC REACH OF OVER 13 METRES

Before Mariani Landscaping of Lake Bluff, an affluent suburb of Chicago, took delivery of their new HIAB 215 they had to rent equipment from a competitor to transplant mature trees.

Or even worse – avoid this type of job entirely.

But with the growing awareness of the environment in the United States, having larger trees planted on both industrial estates and private properties has become increasingly popular.

So Mariani felt it was necessary to be able to offer customers this service.

And the company's owner, Frank Mariani contacted the Chicago office of Cargotec Inc, Hiab's distributor in the United States.

What they recommended was a HIAB 215-3, with a maximum hydraulic reach of over 9 metres.

It was fitted with a winch that's used to straighten larger trees when the root ball is picked up with a chain basket, and mounted on a Peterbuilt truck that can be converted to a semi-tractor when the platform is removed.

The short version is used for transporting trees that weight up to 12,000 lbs

(approx. 5,500 kg).

And a 48 ft (14.5 metre) trailer is attached when transporting nursery stock

– sod, smaller trees, bushes, flowers, fertilizer, etc.

No. 8



The HIAB 215 can be fitted with either the HIAB Valve 40 or the new HIAB Valve 91.

HOLLAND

HANDLING FEATHERS CAN BE HARD, HEAVY WORK

A company in Eelde, Holland bought a new HIAB 060 to pick up feathers.

That's right – feathers.

When Euroveer began business over thirty years ago the feathers they handle were used to fill pillows and quilts.

Now most of them are ground up into feather flour for cattle feed.

"We collect about 450 tonnes of feathers a week from poultry slaughter houses all over Holland and Germany," says the company's owner, Mr. Joustra.

"It's hard, heavy work, so we need equipment that's reliable," he adds. "Which is why we've been using Hiab cranes for years."

The company's newest crane is a HIAB 060-2 equipped with a rotator and grapple which can lift 350 to 400 kgs of

feathers at a time.

It can be operated from either the standard valve position or a high platform behind the cab that allows the operator a good view inside the contain-

er's used to transport the feathers.

And the HIAB 060's exceptional reach makes it easy to work over these large containers and spread the load evenly.

No. 9



Euroveer's new HIAB 060-2 is mounted on a truck equipped with a demountable system.



HIAB'S 50TH ANNIVERSARY FESTIVITIES LASTED A WEEK

Over two thousand people gathered in Hudiksvall, Sweden this summer to help Hiab celebrate its 50th anniversary.

The festivities began with a giant cocktail party for Hiab employees outside the company's head office, an event that was also attended by many suppliers, a number of local politicians and several executives from other companies in the area including Iggesund Paperboard and Ericsson Cable.

The atmosphere was rather sedate at first as guests stood chatting and sipping sparkling wine, or sampling the Swedish smörgåsbord that had been spread out in four large tents specially set up for the occasion.

Then Hiab's president, Ulf Åhman popped out of a box to say a few words, scantily-clad samba dancers started winding their way through the crowd and the party went into high gear, lasting until long after midnight.

But that was just the beginning.

A few days later hundreds of other people, including HIAB distributors and employees from Hiab's subsidiaries around the world, invaded this small Norrland community.

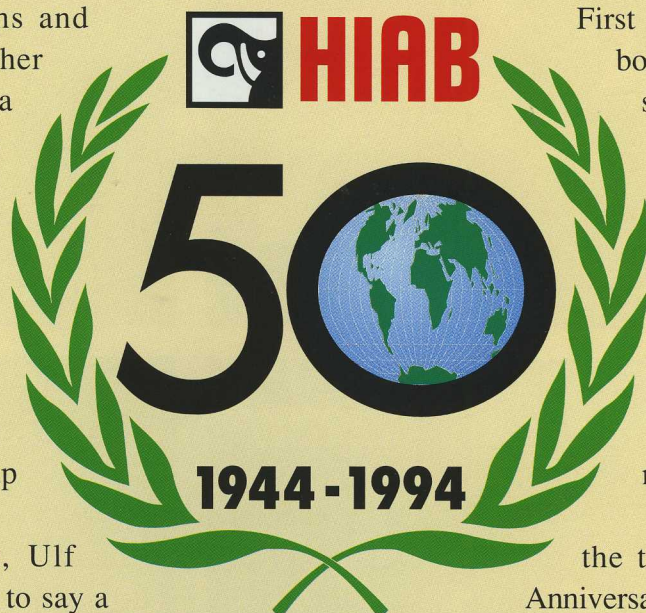
And the party continued.

First there was a concert featuring both traditional and modern music in Järvsö Church, one of the largest churches of its kind in rural Sweden, followed by an 18th century dinner at Delsbo's open air museum.

Then a chance to relax with a game of golf, a boat trip up the Baltic coast, or a dance around a Swedish midsummer-maypole.

Finally everyone was off to the track for the Hiab AB 50th

Anniversary Race, a trotting event where there were no real losers, and a farewell dinner where some new product was introduced that gave a hint of things to come during the next 50 years.









GERMANY

REDUCES RISK OF DAMAGE

Franz Josef Oster has been renovating old buildings and churches in the picturesque town of Bernkastel since 1986.

But before he took delivery of his new HIAB there were a lot of projects he had to turn down.

Because not only was hiring a crane expensive, it was often difficult to arrange to have one on site when it was needed.

Having his own crane seemed to be the only practical alternative.

So after lengthy discussions with Clemens, the local Hiab distributor, Mr. Oster arrived at what he felt was a satisfactory solution – a HIAB 120-2 equipped with a winch and jib.

He's had a Hiab remote control system installed as well, so that building materials like slate and stone can be easily unloaded exactly where they're needed with great precision.

And with little risk of damaging buildings that have been painstakingly restored.

No. 10



Mr. Oster's HIAB 120-2 is equipped with a winch, a jib and a Hiab remote control.

DENMARK

THEY DEMAND BETTER SERVICE

When Hjøllunds Timber Transport Co., in Jutland, Denmark started business 65 years ago, they used horses.

Today the son of the founder, Paul Jensen, uses more modern methods – like a HIAB 215-4 equipped with HIAB CombiDrive remote control.

Because now a lot of the company's business consists of transporting roof trusses to the eastern Germany where they are fitted on site.

And when millimetre precision is required, Hiab CombiDrive is absolutely essential.

Even more important, the company saves time and money when they transport the goods from the factory to the site themselves – a service that customers are demanding more and more.

No. 11



HIAB CombiDrive provides millimetre precision.

A U S T R A L I A

TRAVELLING THE TRACKS BORING HOLES AND LIFTING POLES

Passengers waiting on the platform at Perth's railway station got the surprise of their life recently when, instead of a train, a Mitsubishi 9 tonne truck came rolling along the tracks.

The truck, which is equipped with a road/rail gear that allows it to be driven on tracks with a speed of up to 40 kms



per hr, is operated by Westrail, the Western Australia Government Railways Commission.

And it's equipped with a new HIAB 140 capable of performing a wide range of jobs.

But what the original tender called for specifically was a crane that could bore holes, lift concrete poles into position and support contact and catenary wires while the wire was uncoiled from cable drums.

Close liaison between Arthur Rowcliffe, Westrail's Chief Engineer and Hiab's distributor in Australia, 600 Machinery Australia PTY Ltd. produced a solution that would handle the job with ease.

They also fitted this versatile crane with a HIAB CombiDrive remote

Plus a top seat control and a HIAB CombiDrive remote control system

And an earth auger capable of drilling holes to a depth of four metres and a diameter of 450 mm to 750 mm.

Power for the crane is provided by a Hatz diesel engine.

No. 12



This HIAB 140 is equipped with a large earth auger.

N O R W A Y

SAVES TIME SPREADING SOIL

The windswept islands off the west of Norway have little natural vegetation because there is almost no soil.

To get anything to grow, earth must be shipped from the mainland, then spread over wide areas of land.

One local community has found the fastest, most effective way to do this is by using a HIAB 125-4 which, with its hydraulic reach of 12.2 metres, allows operator's to cover a wide surface without having to move their vehicle.

The crane is mounted on a Scania 142 truck equipped with a clamshell bucket, a rotator and 1.5 tonne winch.

It also has several control options.

No. 13



This HIAB 125-4 has several control options including a top seat.



BLASTING MATS NOW ONE MAN OPERATION

Nu-Age, which has offices in both Durham and Aird, Ontario recently purchased a HIAB 300 that will primarily be used to handle blasting mats.

The company, which specializes in rock drilling, blasting and demolition work, previously had a stiff boom truck mounted crane but they find their new HIAB much more flexible.

“And the remote control system is a real advantage,” says a company spokesman. “Now handling these mats is a one man operation.”

“The HIAB 300 is also very versatile. We use it for moving a variety of equipment and materials in addition to the explosive magazines, drill compressors, etc. that are used at blasting sites.”

“Another reason we chose Hiab was that this crane is working every day and we had to be sure we’d get good after sales service,” he added.

“With Hiab, we know service is available right across the province.”

No. 14

These blasting mats weigh 3,000 to 5,000 lbs (approximately 1350 to 2300 kg).

SWITZERLAND

060 IDEAL FOR MANY JOBS

The Department of Public Works in Luzern wanted a crane capable of performing a wide variety of tasks economically and efficiently.

A crane that could be used for everything from laying water and gas pipes, to lifting manhole covers and putting up streetlight poles, or installing electric cables.

The HIAB 060, an exceptionally robust crane that can be used for either general cargo handling or bucket operation, was deemed ideal.

And it’s available with up to three hydraulic extensions giving it a maximum hydraulic reach of almost 9 metres.

No. 15



This HIAB 060 is used for a wide variety of jobs in Luzern.



SWEB's HIAB 045-2's have a hydraulic reach of over six metres which makes them ideal for erecting and servicing light standards.

HIAB 045 HAS LOTS OF REACH

The numerous outreach options available for the versatile and rugged HIAB 045 have made it extremely popular in England.

The Street Lighting Division of South Western Electricity Board (SWEB) in Bristol, for example, recently purchased eleven HIAB 045-2s to erect and repair light standards.

Their choice was based primarily on the crane's excellent lifting height – something that's absolutely essential for putting up telecommunication poles, electricity poles, etc. with precision.

With two hydraulic extensions, the HIAB has a hydraulic reach of more than 6 metres.

Yet, this extremely compact 4.3 tonne-metre capacity crane weighs just 735 kg in its standard version.

SWEB's crane's are also equipped with tamping and levering tools powered by the crane's hydraulic circuit for erecting standards along narrow roads and in other confined areas.

No. 16

S W E D E N

FUEL COSTS ARE CUT BY 85%

Winters in Sweden are extremely cold and heating homes and offices with traditional methods like oil, gas or electricity can be expensive.

But if timber waste products like wood chips from sawmills, furniture factories, etc are used, fuel costs can be reduced by as much as 85%.

That's why Bengtsson Biovärme AB in Delsbo, a small village about 300 km north of Stockholm, has developed a new solid fuel heating system,

And with the help of a stationary HIAB 070A equipped with a scrap grab, the system's furnace is fed automatically.

When the fuel level is low, a metre sends a signal to the robot operating the crane. The crane then grabs a load of wood chips and drops it down a shaft where it's forced into the furnace

No. 17



This stationary HIAB 070 is playing a role in a project that could cut heating costs in Sweden dramatically.



Völunder Sigurbjörnsson's new HIAB 215-5 has a maximum reach of almost 25 metres.

HERE YOU NEED A CRANE CAPABLE OF PERFORMING A WIDE VARIETY OF JOBS EFFICIENTLY, ECONOMICALLY

Völunder Sigurbjörnsson, who operates an independent transport company in Borganes, Iceland wanted a crane that was capable of performing a wide variety of jobs.

Everything from loading and unloading precast concrete products to hoisting fishing boats out of the water and inspecting power lines for Icelandic Electricity.

That meant he had to get a crane with a lot of reach.

And after spending almost a year carefully comparing what different crane manufacturers had to offer, what he eventually got was a HIAB 215-5.

With five hydraulic extensions, the HIAB 215 has a maximum hydraulic reach of 13.3 metres where it is still capable of lifting 1050kg.

But if you also have a JIB 60 with manual extensions, like Mr. Sigurbjörnsson, the crane's reach can be increased to almost 25 metres.

His crane was also equipped with a two man personnel basket and a HIAB

CombiDrive remote control system.

"I'm really impressed with CombiDrive," says Mr Sigurbjörnsson.

No wonder.

CombiDrive not only provides operators with freedom of movement for smoother, safer lifts.

In combination with the HIAB Valve 91 it also allows you to preset the maximum speed of each individual crane function.

And for precision handling, there's a button on the control box that can be used to temporarily reduce the speed of all functions to either 20% or 50% of the crane's normal operating speed.

No. 18



HIAB CombiDrive provides smoother, safer lifts.

THE LATEST ADDITION TO HIAB FAMILY

Hiab's wide range of truck-mounted cranes now includes an incredibly powerful knuckle-boom crane specially designed to handle really heavy machinery and construction equipment.

The new HIAB 870, which is available with up to six hydraulic extensions, has a lifting capacity of over eighty tonne-metre and a maximum hydraulic reach of 17 metres.

It's also equipped with SPACE Control, a computerised control and safety system which features among other things an overload protection function that continuously monitors the load, as well as the position and movements of the crane.

Plus the HIAB Valve 91. And an advanced remote control system called CombiDrive.

A new electronic link designed to increase lifting capacity at high boom elevation is also standard on the latest addition to the HIAB family.

No. 19



The new HIAB 870 has a lifting capacity of over eighty tonne-metres.



This unit attracted a lot of attention in Toronto.

MAKES AN IMPRESSIVE PACKAGE

The staff at Mack Truck's sales office on the Queensway, a busy street in the westend of Toronto, Canada have discovered a great way to attract the attention of passing motorists.

They mounted a shiny new HIAB 160-4 from Atlas Polar Co. Ltd., Hiab's Canadian distributor, on an equally well polished Mack CL 713 heavy duty tractor and put it on display right outside their building.

The CL 713, which features a Mack E7 400 hp engine and has an 18,000 lb. front axle and a 44,000 lb. rear axle, is just one of a full range of new heavy Mack Trucks introduced in the last few years.

And when it's equipped with a HIAB 160, it makes a really impressive package.

So it's not surprising that the unit caught people's attention. Maybe even sold a few trucks.

No. 20



Kings have streets named after them. So do movie stars, war heroes, politicians and sport celebrities, and well known companies like Hiab

Hiabsvej (Hiab Road) is situated in Paarup, a small town in Jutland, where SAWO Hydraulic A/S, Hiab's Danish distributor, started a service depot almost thirty years ago.

Shortly after the depot was opened, a representative from the local business community approached the service manager, Regnar Jørgensen, wondering if his company might consider paying for installing lighting on the street.

"Sure," said Regnar. "If you put up a sign that says Hiab Road."

And that's exactly what they did.

IT'S THE FIRST HYDRAULIC JIB IN PERU

Malvex, the Hiab distributor in Peru, recently delivered the first truck-mounted crane sold in that country with a hydraulic jib.

The HIAB 140 equipped with a HIAB Jib 30 was purchased by Electrocentro, the State owned electricity company, for its depot in Pucallpa, close to the Brazilian border.

The unit will be used primarily for handling transformers and erecting distribution poles.

It also has a insulated two man personnel basket for inspecting and repairing power lines, light standards, etc.

No. 21



This HIAB 140 equipped with a HIAB Jib 30 was recently sold by Malvex del Peru S.A.

NEW BASKETS DESIGNED FOR HIAB CRANES

One of the first new personnel baskets specially designed for Hiab was recently delivered to Vattenfall, an electricity company in Vännäs, Sweden.

The LOGOS PB 250 two-man personnel basket is made from lightweight aluminum, weighs 85 kg and has a maximum capacity of 215 kg.

It features unique, adjustable, dual hydraulic dampers to prevent the basket from swinging from side to side, plus a lever operated lock to prevent the basket from tipping and a quick coupling attachment.

There's also a sturdy guard rail to protect the front of the basket, large openings in the sides to permit easy loading and a anti-slip floor plate.

One thousand volt electric insulation between the yoke and the crane jib is standard.

In addition to the PB 250, LOGOS also makes a one-man basket (PB 150) that weighs 75 kg and has a maximum capacity of 155 kg.

Both baskets will be sold by Hiab distributors worldwide.

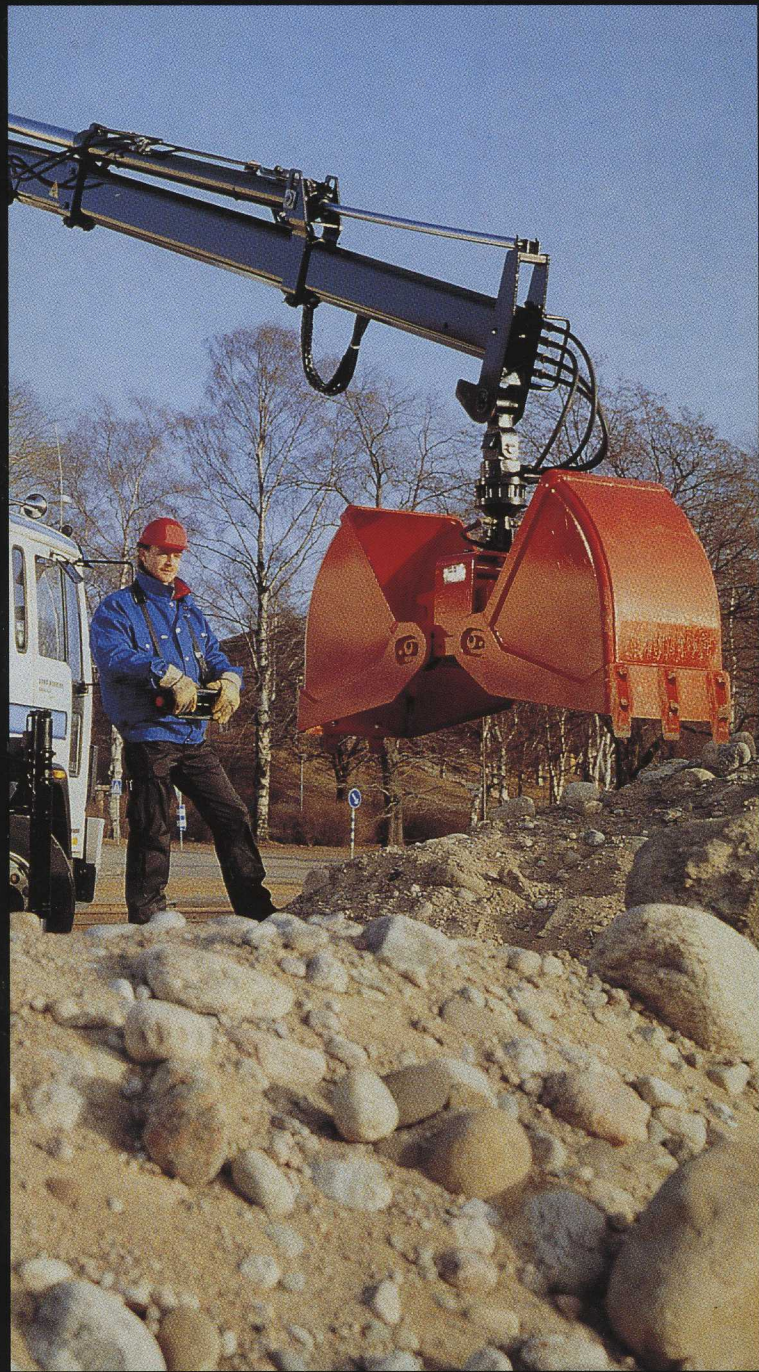
No. 22



A Volvo FL 612 mounted with a HIAB 060 using the new LOGOS PB 250 personnel basket.



THE FIRST
HYDRAULIC JIB



NETFOLD

No. 46

