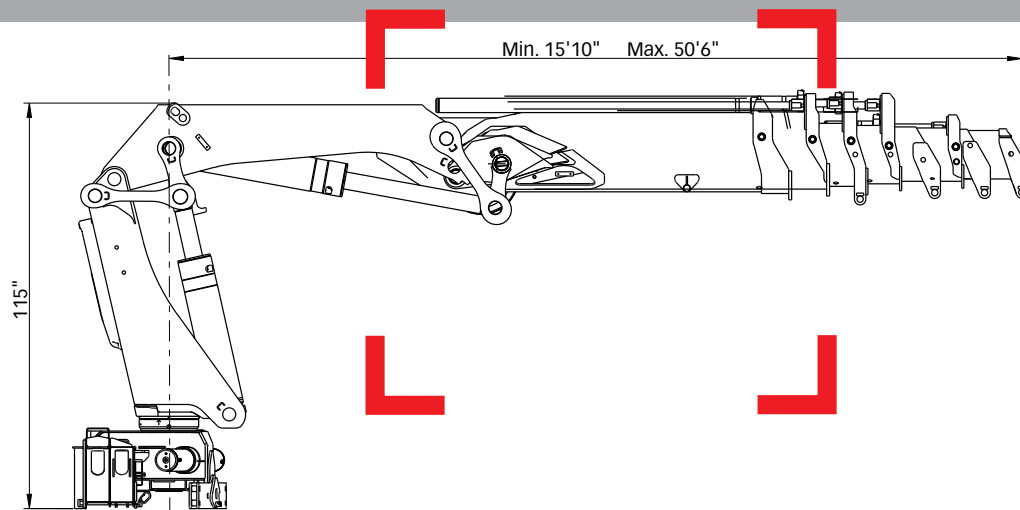





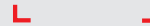
# HIAB XS 477 CLX Capacity 289,300 ft-lbs (40 tm)



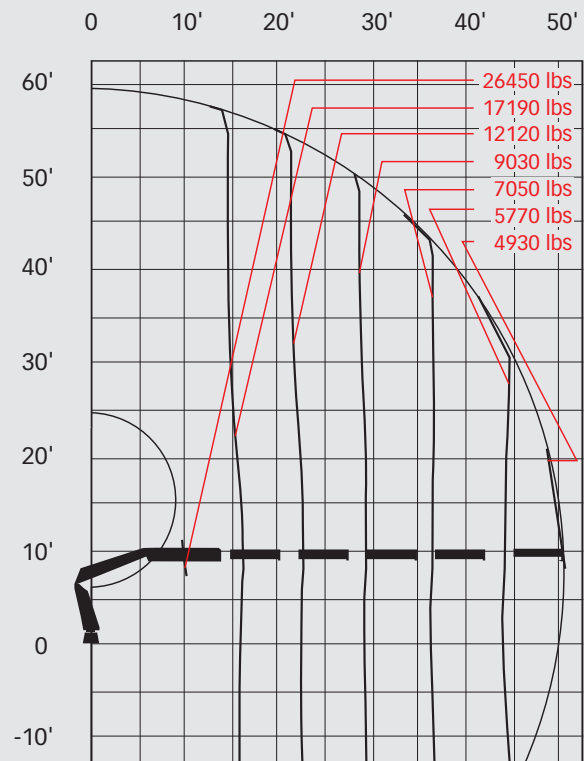
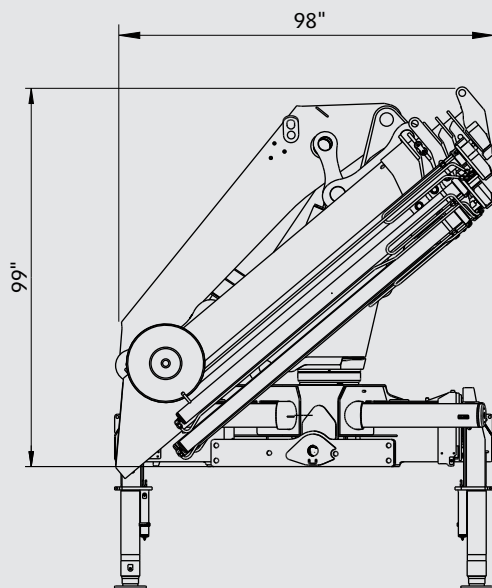
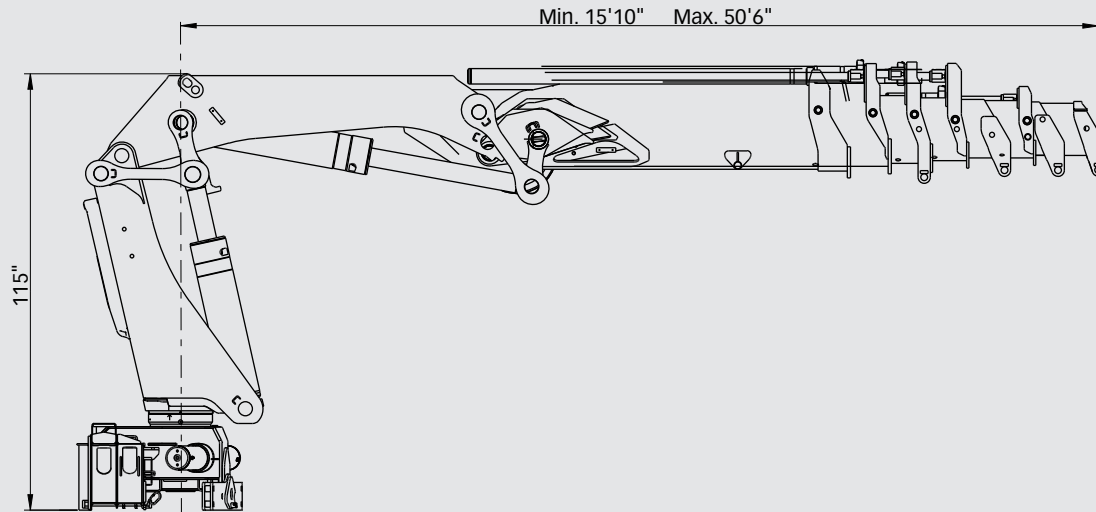
Basic data

# HIAB 477 CLX Basic data

 <b>Technical data</b>	<b>EP-2 CLX</b>	<b>EP-3 CLX</b>	<b>EP-4 CLX</b>	 <b>EP-5 CLX</b> 
Max. lifting capacity (ft-lbs)	291,300	285,400	281,000	277,300
Outreach - hydraulic extensions	27'7"	36'1"	43'4"	50'6"
Outreach / Lifting capacity, standard (ft / lbs)	10'6" / 26,450	10'6" / 26,450	10'2" / 26,450	10'2" / 26,450
	14'9" / 19,620	16'1" / 17,850	16'1" / 17,410	16'1" / 17,190
	21'0" / 13,880	22'4" / 12,560	22'4" / 12,340	22'4" / 12,120
	27'7" / 10,580	28'10" / 9,590	28'10" / 9,250	28'10" / 9,030
	-	36'1" / 7,600	36'1" / 7,270	36'1" / 7,050
	-	-	43'4" / 6,080	43'4" / 5,770
	-	-	-	50'6" / 4,930
Slewing angle	400°	400°	400°	400°
Height in folded position	95"	99"	99"	99"
Width in folded position	98"	98"	98"	98"
Installation space needed	58"	58"	58"	58"
Weight - "standard" crane without stabilizers (lbs)	8,050	8,620	9,080	9,680
Weight - stabilizer equipment (lbs)	1,390 - 1,850	1,390 - 1,850	1,390 - 1,850	1,390 - 1,850



> **HIAB XS 477 EP-5 CLX**



**Disclaimer**

Hiab cranes have been built to meet the highest standards of safety and service life and have been thoroughly tested. Strength calculations for this model have been carried out in accordance with EN13001. Hiab's certified Quality Assurance System complies with the ISO 9001. Some of the items in our literature may be extra equipment. Certain applications may require an official permit. We reserve the right to change technical specifications without prior notice. Hiab cranes produced for EU-countries are CE-marked and comply with the European Standard EN 12999.



Hiab is part of Cargotec Corporation

