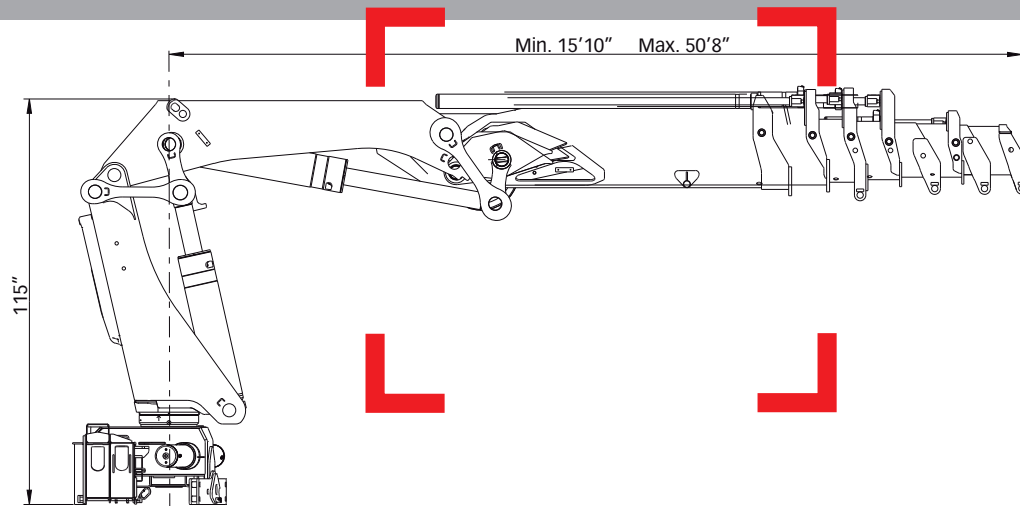





HIAB XS 422 CLX Capacity 267,620 ft-lbs (37 tm)

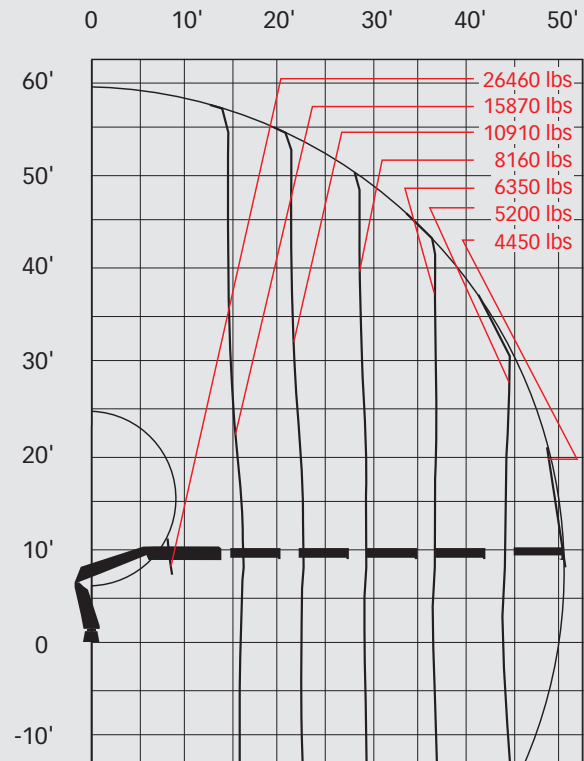
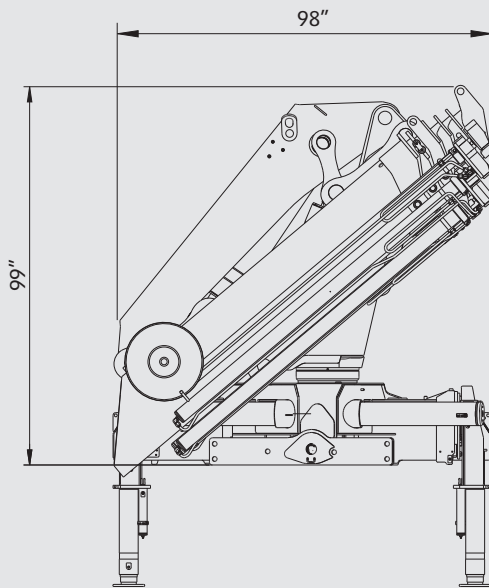
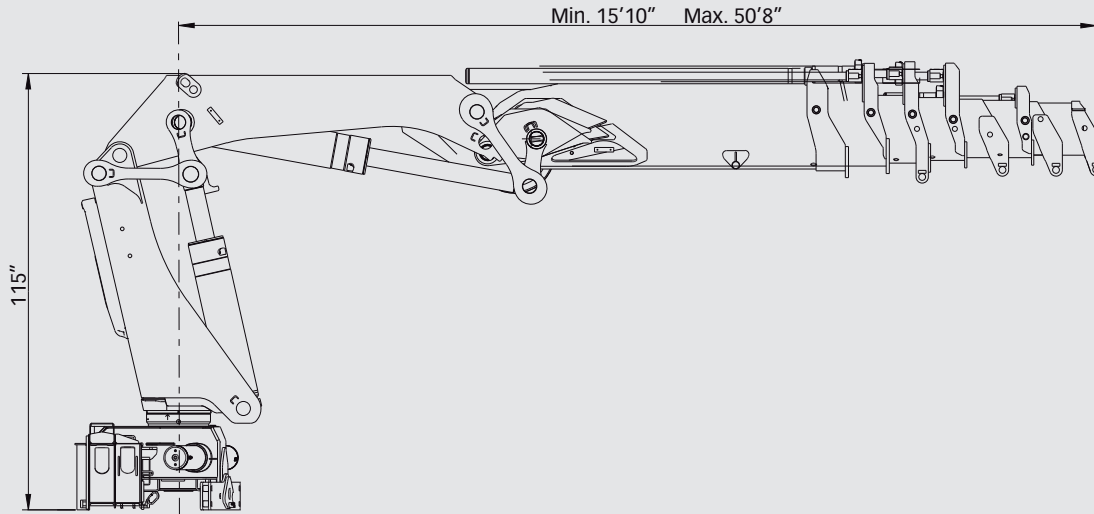


Basic data

HIAB 422 CLX Basic data

 Technical data	EP-2 CLX	EP-3 CLX	EP-4 CLX	 EP-5 CLX 
Max. lifting capacity (ft-lbs)	267,000	261,830	257,410	253,720
Outreach - hydraulic extensions	27'7"	36'1"	43'4"	50'6"
Outreach / Lifting capacity, standard (ft / lbs)	9'6" / 26,460	9'6" / 26,460	9'2" / 26,460	9'2" / 26,460
	14'9" / 18,080	16'1" / 16,310	16'1" / 16,090	16'1" / 15,870
	21'0" / 12,790	22'4" / 11,460	22'4" / 11,240	22'4" / 10,910
	27'7" / 9,700	28'10" / 8,820	28'10" / 8,490	28'10" / 8,160
	-	36'1" / 6,940	36'1" / 6,610	36'1" / 6,350
	-	-	43'4" / 5,510	43'4" / 5,200
	-	-	-	50'6" / 4,450
Slewing angle	400°	400°	400°	400°
Height in folded position	95"	99"	99"	99"
Width in folded position	98"	98"	98"	98"
Installation space needed	58"	58"	58"	58"
Weight - "standard" crane without stabilizers (lbs)	8,000	8,580	9,040	9,630
Weight - stabilizer equipment (lbs)	1,390 - 1,850	1,390 - 1,850	1,390 - 1,850	1,390 - 1,850

> **HIAB XS 422 EP-5 CLX**



Disclaimer

Hiab cranes have been built to meet the highest standards of safety and service life and have been thoroughly tested. Strength calculations for this model have been carried out in accordance with EN13001. Hiab's certified Quality Assurance System complies with the ISO 9001. Some of the items in our literature may be extra equipment. Certain applications may require an official permit. We reserve the right to change technical specifications without prior notice. Hiab cranes produced for EU-countries are CE-marked and comply with the European Standard EN 12999.



Hiab is part of Cargotec Corporation

