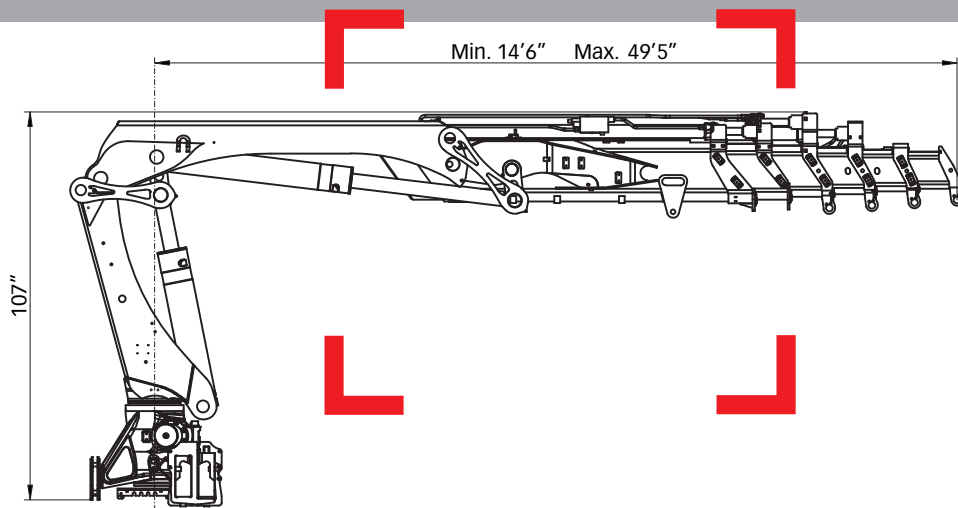


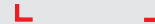
# HIAB **XS** 377 CLX Capacity 231,460 ft-lbs (32 tm)



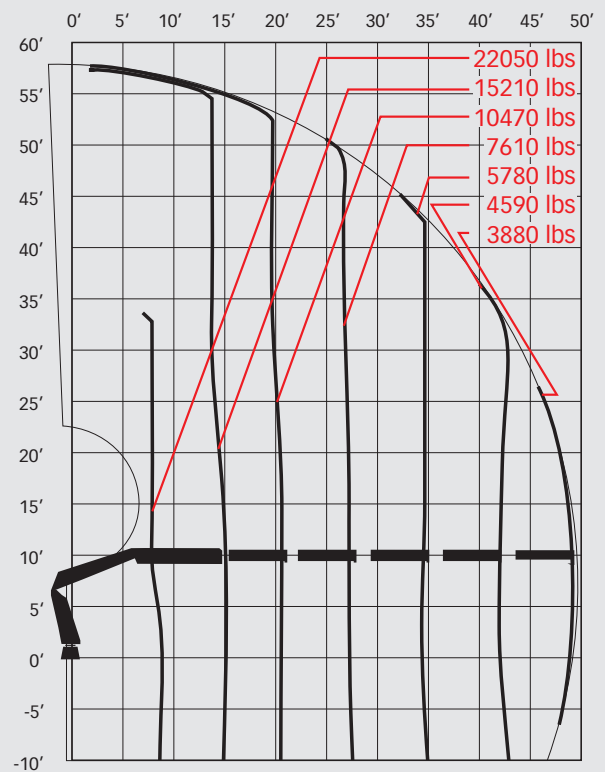
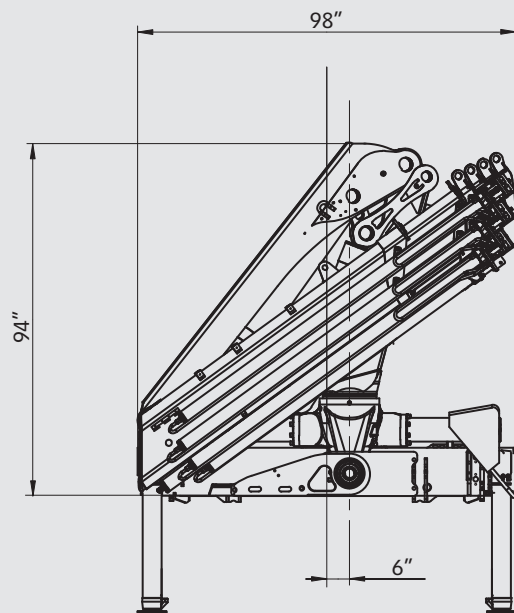
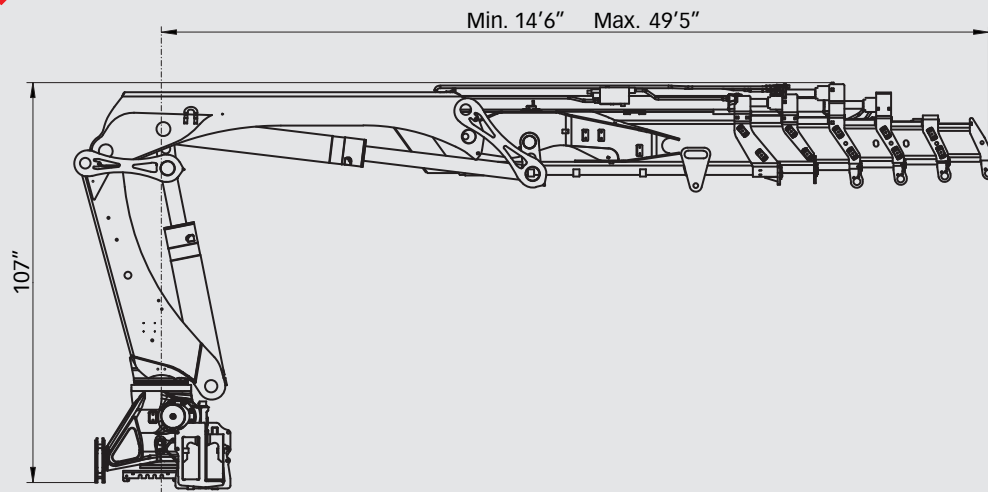
Basic data

# HIAB 377 CLX Basic data

<b>Technical data</b>	<b>EP-2 CLX</b>	<b>EP-3 CLX</b>	<b>EP-4 CLX</b>	<b>EP-5 CLX</b>
Max. lifting capacity (ft-lbs)	234,540	229,380	224,960	221,270
Outreach - hydraulic extensions	26'3"	33'6"	41'4"	49'3"
Outreach - manual extensions	41'4"	49'3"	57'1"	57'1"
Outreach / Lifting capacity, standard (ft / lbs)	10'2" / 22,050	9'10" / 22,050	9'10" / 22,050	9'6" / 22,050
	13'9" / 16,980	13'9" / 16,760	14'1" / 15,870	14'5" / 15,210
	19'4" / 12,130	19'8" / 11,460	20'0" / 10,910	20'4" / 10,470
	25'11" / 9,040	26'3" / 8,490	26'7" / 8,050	26'11" / 7,610
	-	33'6" / 6,610	33'10" / 6,170	34'1" / 5,780
	-	-	41'4" / 4,980	41'8" / 4,590
	-	-	-	49'3" / 3,880
Slewing angle	420°	420°	420°	420°
Height in folded position	94"	94"	94"	94"
Width in folded position	98"	98"	98"	98"
Installation space needed	44"	47"	49"	49"
Weight - "standard" crane without stabilizers (lbs)	6,900	7,390	7,850	8,220
Weight - stabilizer equipment (lbs)	1,140 - 1,360	1,140 - 1,360	1,140 - 1,360	1,140 - 1,360



➤ **HIAB XS 377 EP-5 CLX**



**Disclaimer**

Hiab cranes have been built to meet the highest standards of safety and service life and have been thoroughly tested. Strength calculations for this model have been carried out in accordance with EN13001. Hiab's certified Quality Assurance System complies with the ISO 9001. Some of the items in our literature may be extra equipment. Certain applications may require an official permit. We reserve the right to change technical specifications without prior notice. Hiab cranes produced for EU-countries are CE-marked and comply with the European Standard EN 12999.



Hiab is part of Cargotec Corporation

