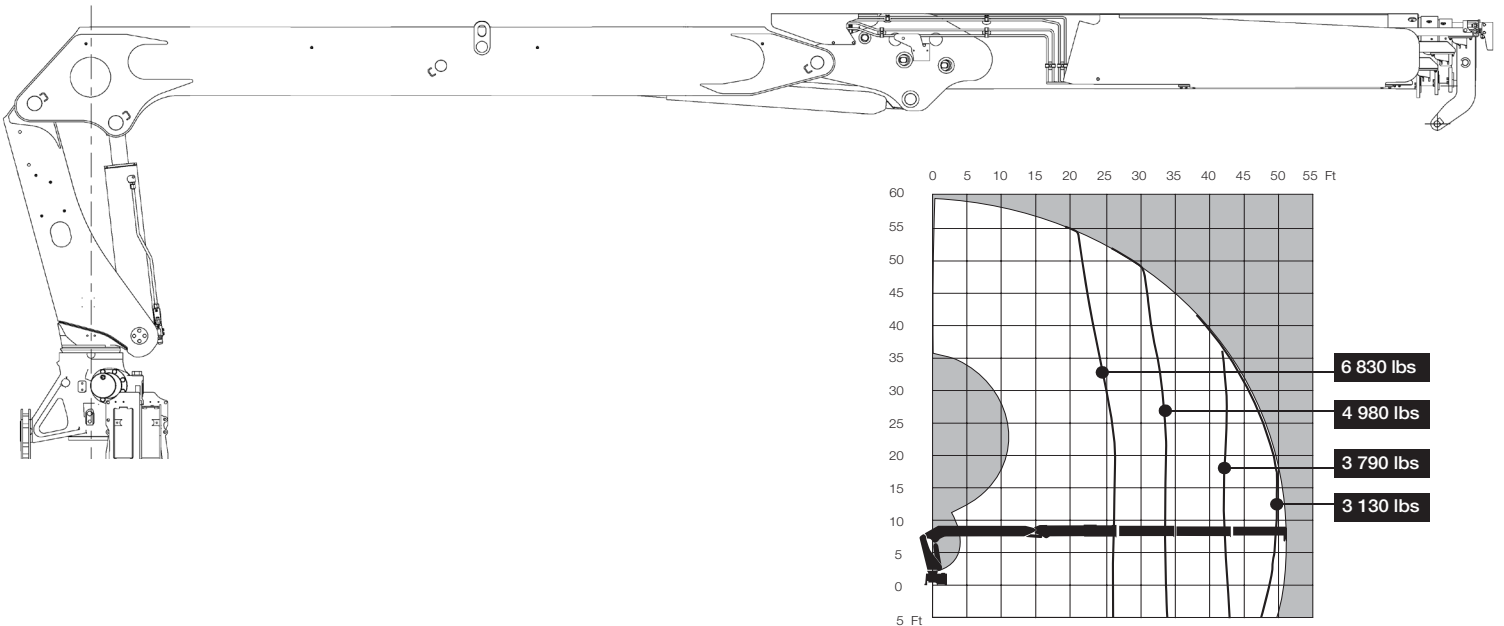


HIAB 285K



HIAB 285K BASIC DATA

TECHNICAL DATA	285K-2 HIPRO	285K-3 HIPRO
Max. lifting capacity (ft-lbs)	195 430	188 050
Outreach, hydraulic extensions (ft)	44' 7"	52' 10"
Outreach, manual extensions (ft)	-	-
Outreach, with jib (ft)	-	-
Outreach / lifting capacity (ft-lbs)	26' 7" - 7 280	26' 7" - 6 830
	34' 5" - 5 420	34' 5" - 4 980
	43' 4" - 4 230	43' 4" - 3 790
	-	51' 6" - 3 130
Outreach / lifting capacity, with jib (ft-lbs)	-	-
Slewing angle (°)	450	450
Height in folded position (in)	112	112
Width in folded position (in)	100	100
Installation space needed (in)	37	37
Weight, "standard" crane without stabilizers (lbs)	8 870	9 370
Weight, stabilizer equipment (lbs)	1 230	1 230
Weight, jib (lbs)	-	-



Disclaimer. Hiab cranes have been built to meet the highest standards of safety and service life and have been thoroughly tested. Strength calculations for this model have been carried out in accordance with EN13001 in fatigue class S2. Cargotec's certified Quality Assurance System complies with ISO 9001. Some of the items in our literature may be extra equipment. Certain applications may require an official permit. We reserve the right to change technical specifications without prior notice. Hiab cranes produced for EU-countries are CE marked and comply with the European Standard EN12999.

Hiab is the world's leading provider of on-road load handling equipment. Our high performance product range includes loader cranes, forestry and recycling cranes, demountables, truck-mounted forklifts and tail lifts. We aim to set the industry benchmark for customer satisfaction by providing products and services that meet customer needs globally.

www.hiab.us.com
Hiab is part of Cargotec.
www.cargotec.com

60 Northline Rd | Toronto ON Canada | M4B 3E5 | 888 799 4422
info@atlaspoler.com | atlaspoler.com



Atlas Polar
IT'S ALL ABOUT QUALITY™