



# HIAB 026 T



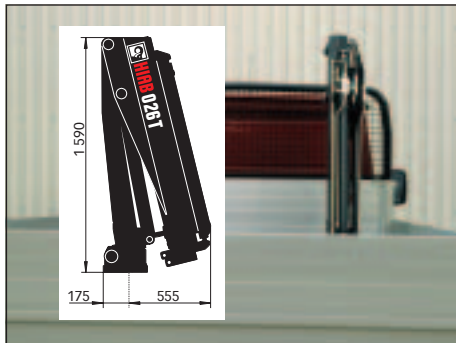
# HIAB 026 T – for the heaviest lifts on light trucks

The HIAB 026 T offers the powerful and durable yet elegant solution to the loading/unloading problem facing the utility vehicles in the modern industrial society. More and more lifting jobs must be carried out in environments where fork lifts are unavailable and pallet trucks are inapplicable. Qualified personnel are scarce, expensive and hard to keep. Having 2 or even 3 persons on a vehicle just to load or unload will mostly be a waste of money, quite apart from the fact that in the future, if it is not already the case, personnel will no longer be allowed to perform heavy lifts.

Connected to the power take-off of the vehicle the HIAB 026 T is a true workhorse. It works continuously for you hour after hour, day after day for many years to come. For those who have a limited need for continuous operation

the HIAB 026 T can be equipped with an electro-hydraulic power pack which contains an oil tank, pump and electric motor with thermo switch to avoid overheating – all in one unit. The computer-designed hexagonal boom system of the HIAB 026 T increases stability and strength in combination with low weight.

More than 50 years of experience in truck loader manufacturing has been invested in the HIAB 026 T. In addition, to meet increasingly demanding environmental legislation, the hydraulic system has been specially designed so it can use biodegradable, vegetable-based oil. On top of that you will also have the most dense and competent service network in the business at your disposal. It's comforting to know that service is available – even though you will rarely need it.



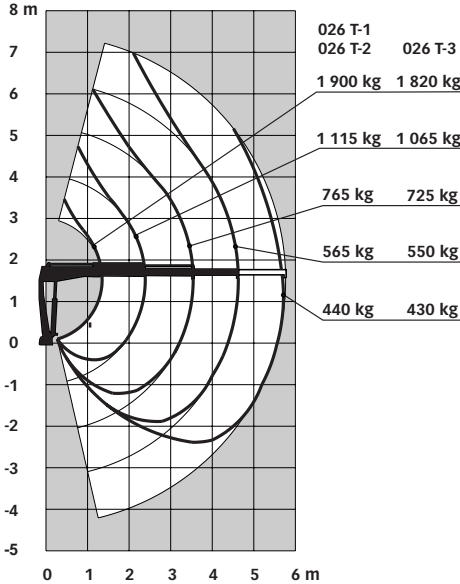
The HIAB 026 T requires the minimum of platform space, and it is so low that it goes in under most pick-up-truck covers.



The control valve and BOSS® safety and control system (on CE-marked cranes) are placed in a protective box.



The O-ring-sealed slewing housing of cast steel with an encased worm gear prevents water and dirt from entering.



## Technical data

	HIAB 026 T-1	HIAB 026 T-2	HIAB 026 T-3
Capacity class	25.4 kNm (2.6 tm)	25.2 kNm (2.6 tm)	25.1 kNm (2.6 tm)
Outreach, hydraulic	3.4 m*	3.4 m	4.6 m
Lifting height above base	5.0 m	5.0 m	6.0 m
with manual extension(s)	7.0 m	7.0 m	7.0 m
Outreach/lifting capacity	1.3 m/ 1 900 kg 2.3 m/ 1 115 kg 3.4 m/ 765 kg*	1.3 m/ 1 900 kg 2.3 m/ 1 115 kg 3.4 m/ 765 kg	1.4 m/ 1 820 kg 2.4 m/ 1 065 kg 3.5 m/ 725 kg 4.6 m/ 550 kg
with manual extension(s)	4.6 m/ 565 kg 5.8 m/ 440 kg	4.6 m/ 565 kg 5.8 m/ 440 kg	5.8 m/ 430 kg
Slewing angle	330°	330°	330°
Weight in standard version	250 kg	265 kg	295 kg
Manual support leg, short/long	12/15 kg	12/15 kg	12/15 kg
Hydraulic support leg, short/long	15/20 kg	15/20 kg	15/20 kg

\*) with 1 hydraulic and 1 manual boom extension

The HIAB 026 T has been built to meet the highest standards of safety and service life and have been thoroughly tested. Strength calculations have been carried out in accordance with the German DIN norm 15018, crane group B 2. Hiab's CE-marked cranes comply with the EU's Machinery Directive. Hiab's certified Quality Assurance System complies with the ISO 9001.

NOTE. Some of the items we describe in our literature may be extra equipment. Certain applications may require an official permit. We reserve the right to change technical specifications without prior notice.

For complete technical data, consult our folder "HIAB 026 T – Technical Data".

For more information about the HIAB 026 T, or any other Hiab crane, please contact your local Hiab distributor.



The World's No.1 Selling Articulated Crane  
HIAB is a Partek Cargotec Company