

Hiab Sea Crane



HIAB · KALMAR · MACGREGOR



Long experience

Hiab started to produce hydraulic knuckle cranes already back in the forties after inventing the hydraulic crane in 1944. Special HIAB Sea Crane development and supply started and since then have been used in demanding applications like lifting the space capsules after landing from the ocean already in the beginning of the sixties.

Wide application alternatives

Coast guard vessels, work boats, tugs, supply ships, oil drilling platforms, support vessels, subsea trenchers, ice breakers, dredgers, barges, research vessels, lighthouse service ships, fire fighting and oil pollution recovery vessels, cruise ships, navy ships, fishing boats, piers etc... you name it ... HIAB Sea Crane will provide the optimal solution for lifting.

HIAB Sea Cranes, Second to None



Superb features

Wherever you find it in use, the HIAB Sea Crane does an unmatched job. High lifting capacity, durable protection against corrosion and long lifetime. With precise load handling, extra capacity at reduced reach, optional total overload protection, with or without SPACE system, little storage space required when folding the crane, tremendous work area coverage. All thanks to the small parking place requirement and exceptional freedom of movement provided by the knuckle boom principle. The HIAB Sea Crane is outstanding in comparison with outdated Stiff Booms and Derricks. Through the past, now and in the future.

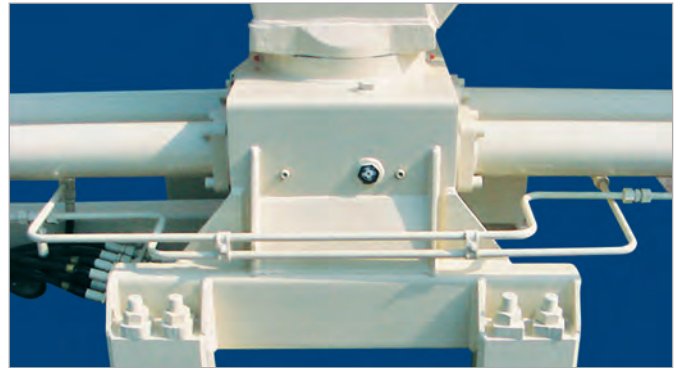
Designer convenient outfitting

HIAB Sea Cranes have capacities from 6 ton meters upto 40 ton meters. Special and other models are developed based on requests. Winches, hydraulic powerpacks and remote controls are all in the HIAB program, matched to the cranes. Ship Designer's HIAB Sea Crane Handbook is available in printed or in electronic format.

High Lifting Capacity



The link system of outer boom gives additional power



A heavy duty double slewing system gives the capacity to operate the crane at max 5 deg of heel and 2 deg of trim without restriction of lifting capacity.

Durable protection against corrosion and long lifetime



Shot blasted boom



Hot dip galvanized beam



Marine painted base

- SA 2.5 shot blast before primer painting will form the base to highest total painting quality
- Stainless steel pipes, hose and pipe fittings are used to prevent corrosion in crucial parts
- Stainless steel bolts are used except in high tensile parts.
- Hot dip galvanizing in extension booms and outer boom beam is made to withstand harsh marine environment.
- Double chrome treatment and special seals on hydraulic cylinders give the protection to trouble free operation in the most demanding conditions
- Marine painting (primer, middle and final paint) of 210 micron is made in Hiab Sea Crane beige color & optional colors available based on customers request.
- Oil bath type slewing system makes easy maintenance and long lifetime of slewing system
- * Strength calculation is carried out in accordance with EN 13001.

The optimal solutions for all Marine Loading, Unloading and Maintenance Work



Service Cranes



Korea Coast Guard



Boat Lifting



Service Cranes

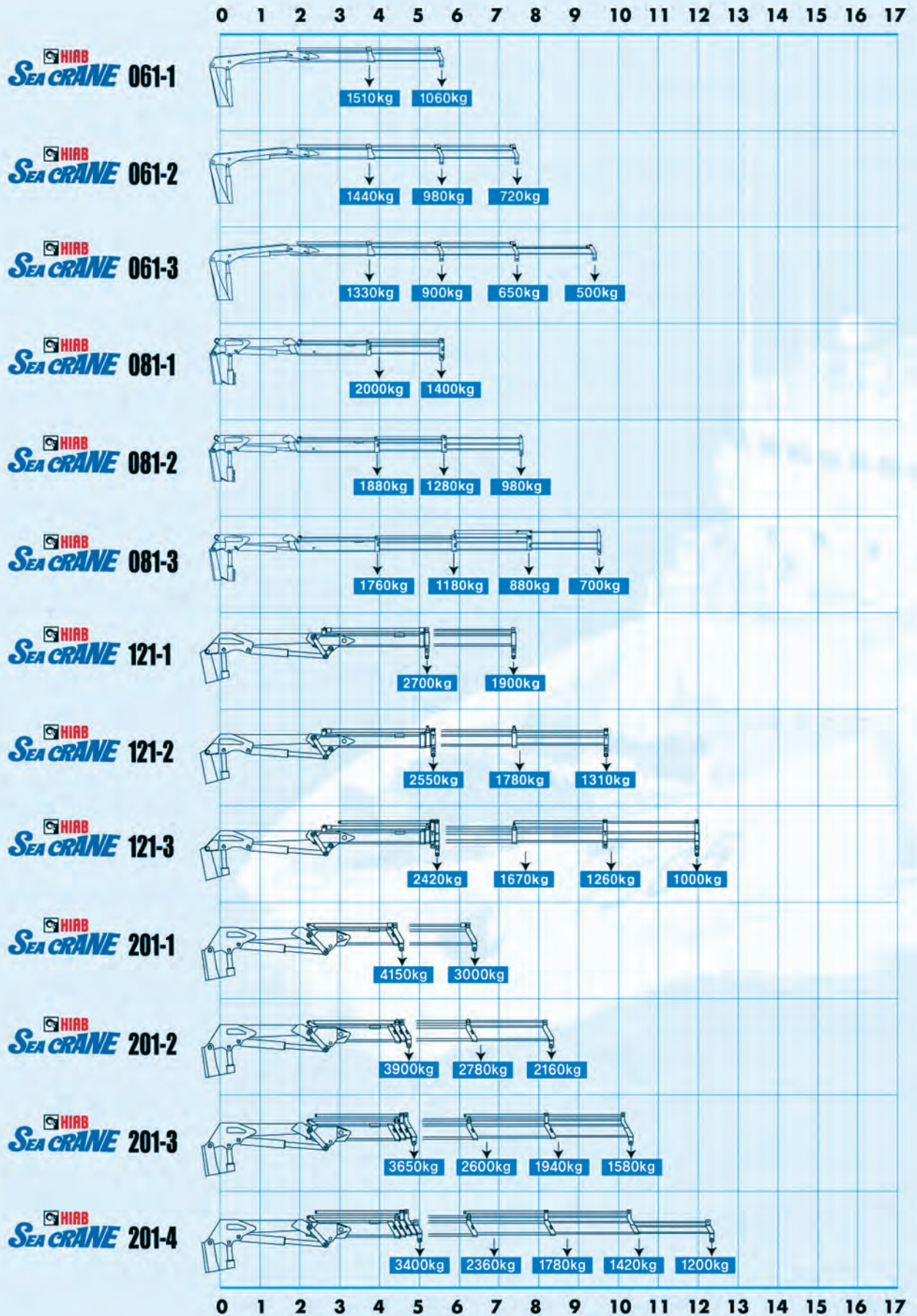
Standards and certification

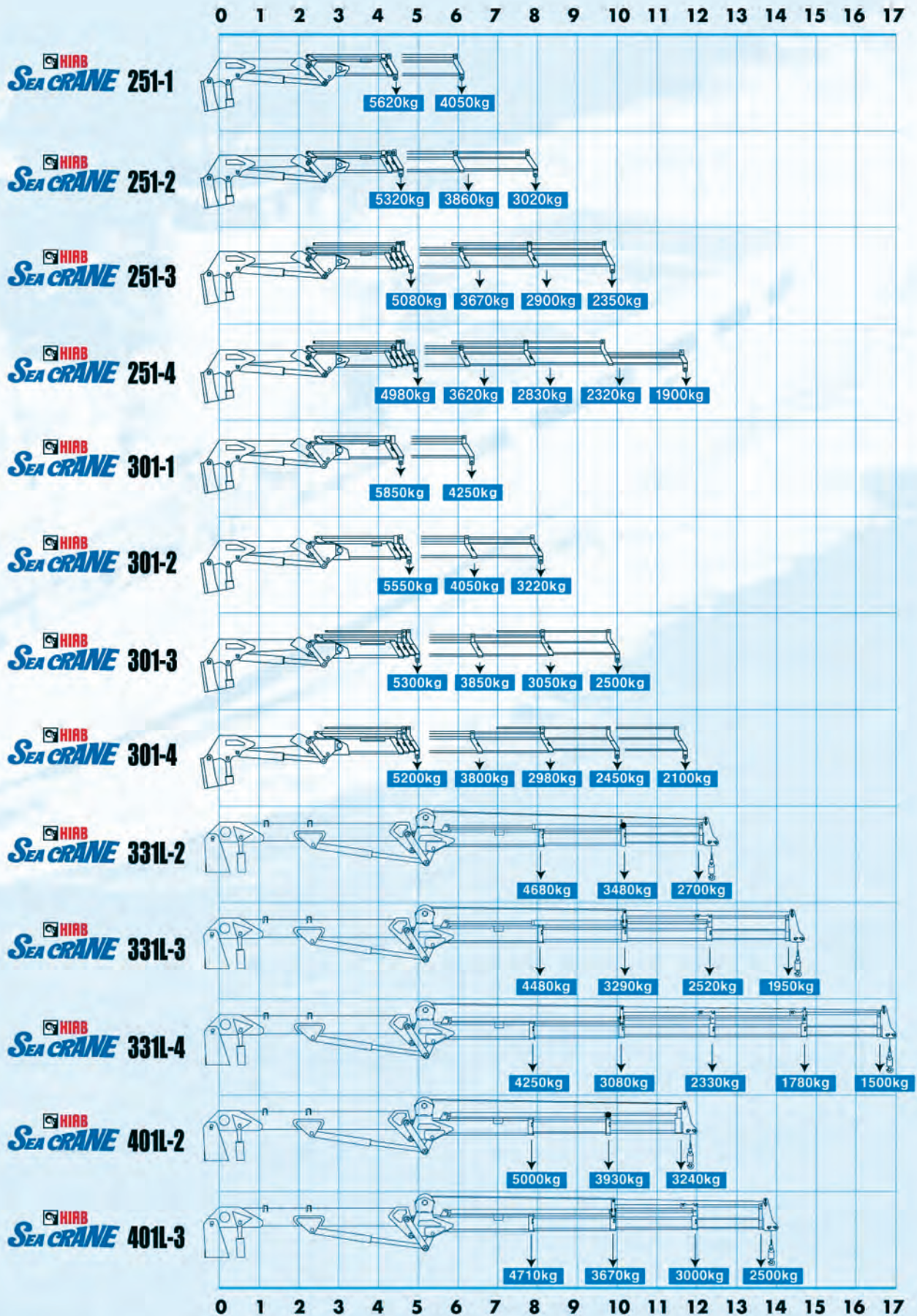


- Hiab Sea Cranes have been built to meet the highest standard of safety and service life and have been thoroughly tested. Design has been carried out in accordance with EN 13001. CE marked models comply with the EU's Machinery Directive.

- All Hiab Sea Cranes can be tested and certified by the classification societies when required. Design and manufacturing quality is assured by ISO 9001:2008, ISO 14001: 2004 by LRQA and OHSAS 18001:2007 by LRQA.

The Hiab Sea Crane knuckle boom range at glance





For more information about Hiab Sea Cranes, please contact your local Hiab distributor
 Specifications are subject to alteration without notice.



Atlas Polar
IT'S ALL ABOUT QUALITY™

Atlas Polar Company Ltd.
60 Northline Road
Toronto, ON M4B 3E5
Canada
1-888-799-4422
info@atlaspolar.com
www.atlaspolar.com