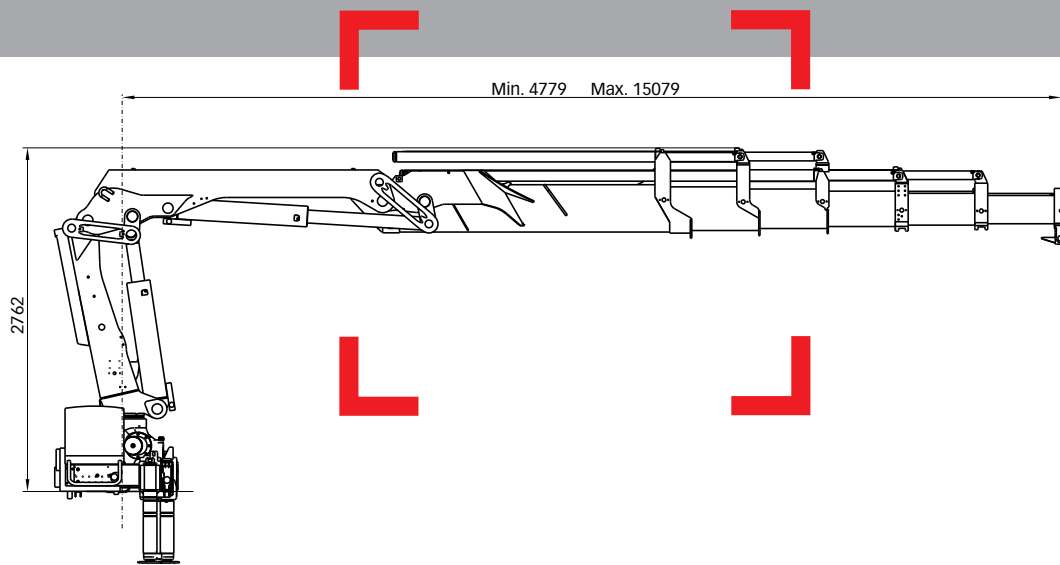


# HIAB XS 166 CLX Capacity 121,000 ft-lbs (16.7 tm)



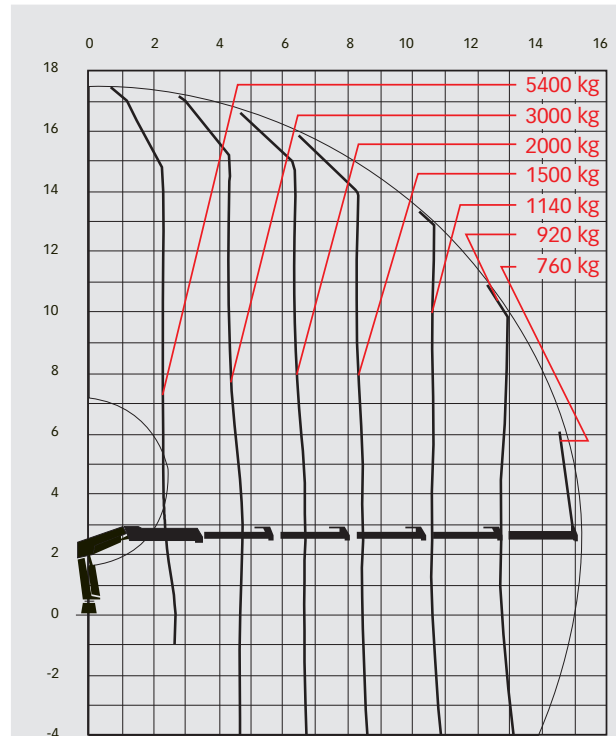
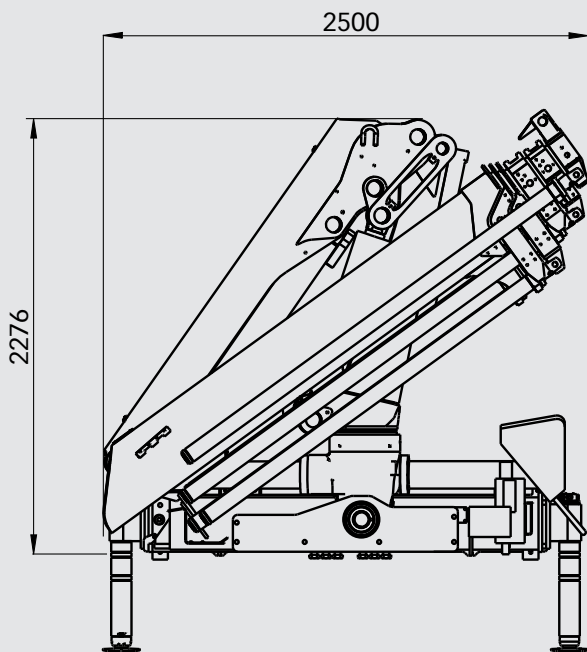
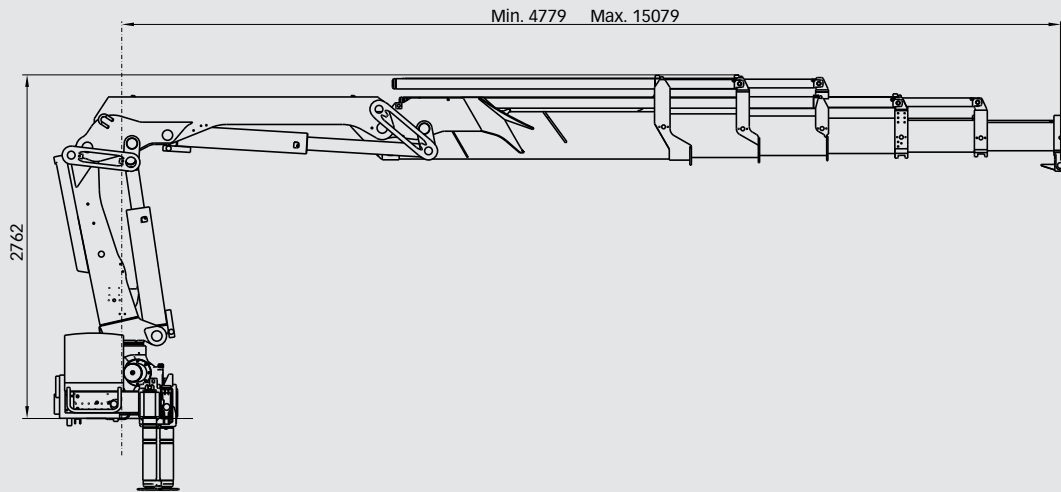
Basic data

# HIAB X166 Basic data

Technical data	B-1 CLX	B-2 CLX	B-3 CLX	E-4 CLX	E-5 CLX
Max. lifting capacity (kNm)	164	156	150	143	141
Outreach - hydraulic extensions (m)	6.3	8.4	10.6	12.8	15.1
Outreach - manual extensions (m)	12.8	12.8	12.8	17.4	17.4
Outreach / Lifting capacity, standard (m / kg)	3.0 / 5500	3.0 / 5300	3.1 / 4900	2.6 / 5600	2.6 / 5400
	4.4 / 3800	4.4 / 3500	4.5 / 3400	4.6 / 3200	4.8 / 3000
	6.1 / 2700	6.2 / 2500	6.3 / 2300	6.4 / 2200	6.6 / 2000
	-	8.1 / 1900	8.2 / 1760	8.4 / 1600	8.5 / 1500
	-	-	10.3 / 1380	10.4 / 1260	10.6 / 1140
	-	-	-	12.6 / 1020	12.8 / 920
	-	-	-	-	15.0 / 760
Slewing angle	406°	406°	406°	406°	406°
Height in folded position (mm)	2208	2208	2208	2232	2276
Width in folded position (mm)	2500	2500	2500	2500	2500
Installation space needed (mm)	953	953	966	953	963
Weight - "standard" crane without stabilizers (kg)	1600	1730	1850	2110	2220
Weight - stabilizer equipment (kg)	255 - 387	255 - 387	255 - 387	255 - 387	255 - 387

Technical data	B-1 CLX	B-2 CLX	B-3 CLX	E-4 CLX	E-5 CLX
Max. lifting capacity (ft-lbs)	120 980	115 040	110 630	105 490	103 970
Outreach - hydraulic extensions	20' 8"	27' 7"	34' 9"	42' 0"	49' 6"
Outreach - manual extensions	42' 0"	42' 0"	42' 0"	57' 1"	57' 1"
Outreach / Lifting capacity, standard (ft - lbs)	9' 10" - 12 130	9' 10" - 11 680	10' 2" - 10 800	8' 6" - 12 350	8' 6" - 11 900
	14' 5" - 8 380	14' 5" - 7 720	14' 9" - 7 500	15' 1" - 7 050	15' 9" - 6 610
	20' 0" - 5 950	20' 4" - 5 510	20' 8" - 5 070	21' 0" - 4 850	21' 8" - 4 410
	-	26' 7" - 4 190	26' 11" - 3 880	27' 7" - 3 530	27' 11" - 3 310
	-	-	33' 10" - 3 040	34' 1" - 2 780	34' 9" - 2 510
	-	-	-	41' 4" - 2 250	42' 0" - 2 030
	-	-	-	-	49' 3" - 1 680
Slewing angle	406°	406°	406°	406°	406°
Height in folded position	87"	87"	87"	88"	90"
Width in folded position	98"	98"	98"	98"	98"
Installation space needed	38"	38"	38"	38"	38"
Weight - "standard" crane without stabilizers (lbs)	3 530	3 810	4 080	4 650	4 890
Weight - stabilizer equipment (lbs)	560 - 850	560 - 850	560 - 850	560 - 850	560 - 850

> HIAB XS 166 E-5 CLX



**Disclaimer**

Hiab cranes have been built to meet the highest standards of safety and service life and have been thoroughly tested. Strength calculations for this model have been carried out in accordance with EN13001. Hiab's certified Quality Assurance System complies with the ISO 9001. Some of the items in our literature may be extra equipment. Certain applications may require an official permit. We reserve the right to change technical specifications without prior notice. Hiab cranes produced for EU-countries are CE-marked and comply with the European Standard EN 12999.



Hiab is part of Cargotec Corporation

