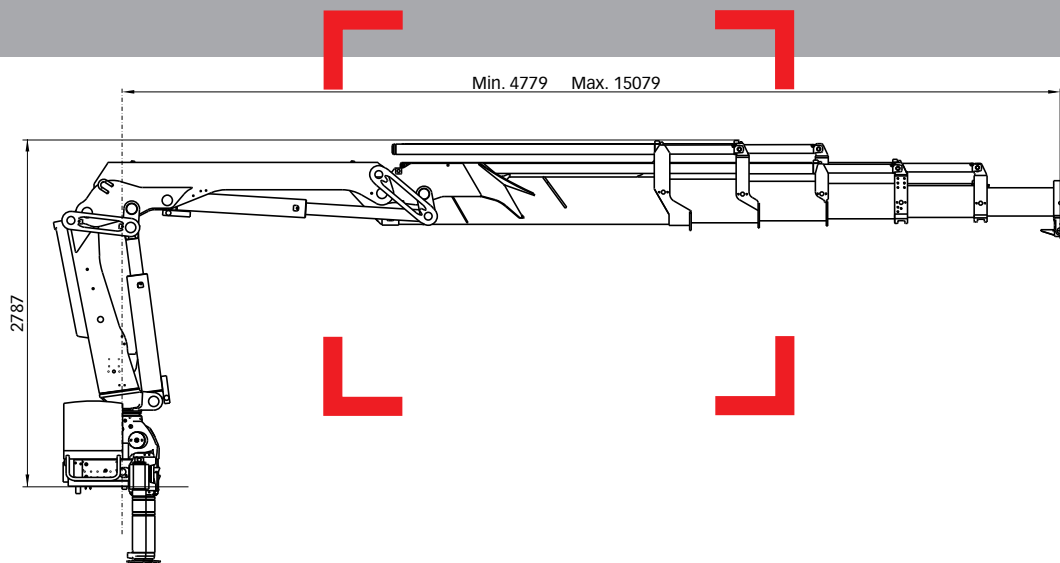


HIAB XS 144 CLX Capacity 102,500 ft-lbs (14 tm)



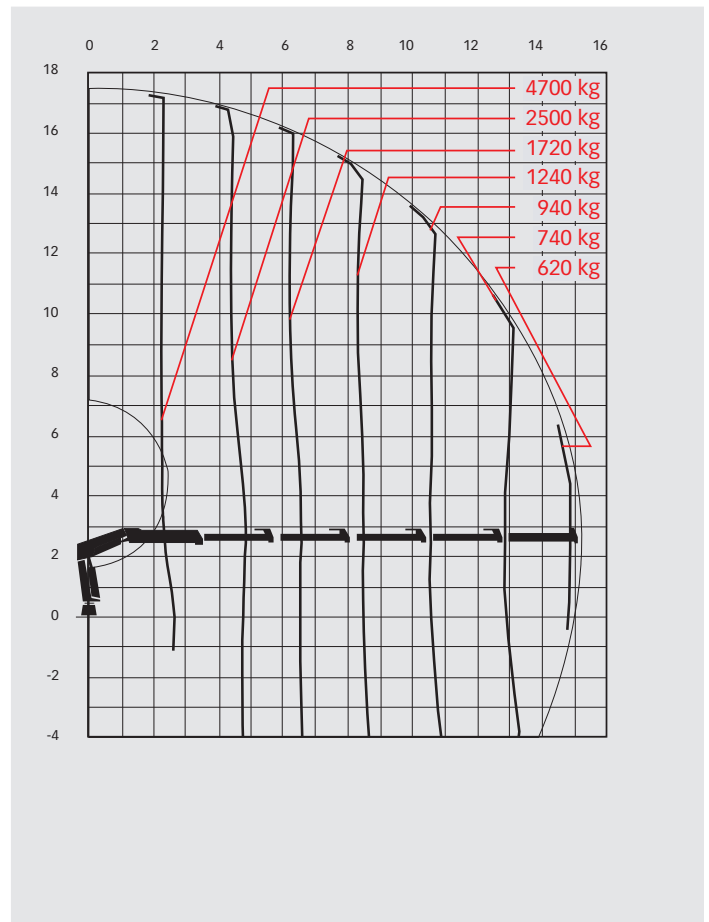
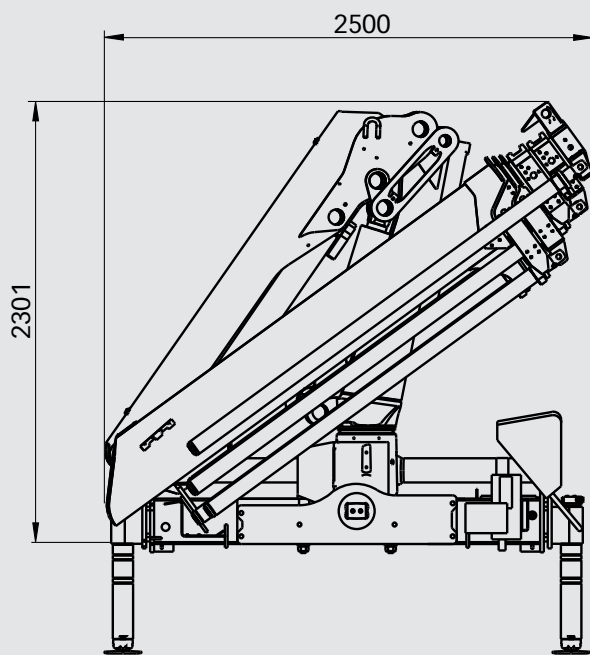
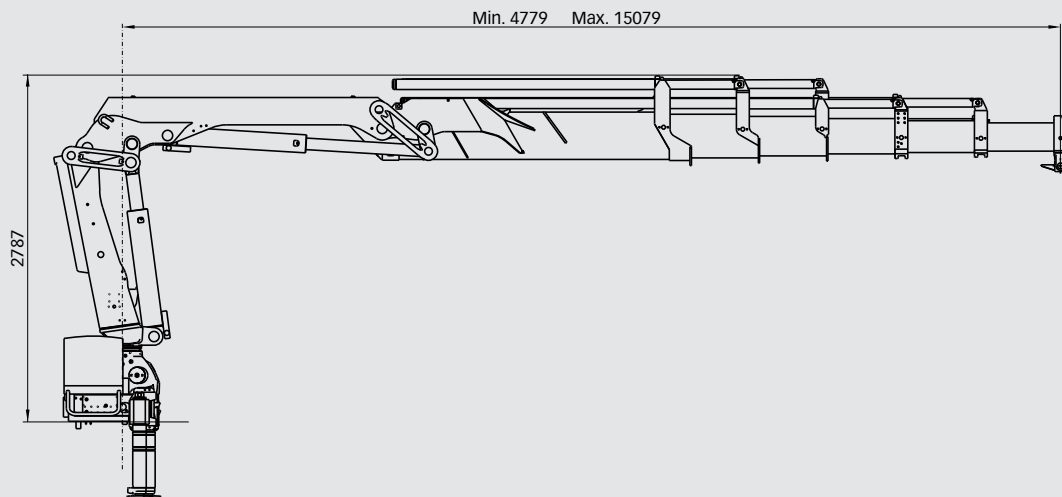
Basic data

HIAB X5 144 Basic data

Technical data	B-1 CLX	B-2 CLX	B-3 CLX	E-4 CLX	E-5 CLX
Max. lifting capacity (kNm)	139	134	131	123	120
Outreach - hydraulic extensions (m)	6.3	8.4	10.6	12.8	15.1
Outreach - manual extensions (m)	12.8	12.8	12.8	17.4	17.4
Outreach / lifting capacity (m / kg)	2.8 / 4900	2.8 / 4600	3.0 / 4300	2.5 / 5000	2.6 / 4700
	4.2 / 3300	4.3 / 3100	4.5 / 2900	4.7 / 2600	4.8 / 2500
	6.0 / 2300	6.1 / 2200	6.3 / 2000	6.5 / 1800	6.6 / 1720
	-	8.0 / 1660	8.3 / 1540	8.4 / 1320	8.5 / 1240
	-	-	10.3 / 1200	10.5 / 1020	10.6 / 940
	-	-	-	12.7 / 820	12.8 / 740
	-	-	-	-	15.0 / 620
Slewing angle	415°	415°	415°	415°	415°
Height in folded position (mm)	2233	2233	2233	2256	2301
Width in folded position (mm)	2500	2500	2500	2500	2500
Installation space needed (mm)	772	772	860	770	854
Weight - "standard" crane without stabilizers (kg)	1 390	1 520	1 630	1 980	2 090
Weight - stabilizer equipment (kg)	195 - 371	195 - 371	195 - 371	195 - 371	195 - 371

Technical data	B-1 CLX	B-2 CLX	B-3 CLX	E-4 CLX	E-5 CLX
Max. lifting capacity (ft-lbs)	102 530	98 840	96 590	90 730	88 490
Outreach - hydraulic extensions	20' 8"	27' 7"	34' 9"	42' 0"	49' 6"
Outreach - manual extensions	42' 0"	42' 0"	42' 0"	57' 1"	57' 1"
Outreach / lifting capacity (ft - lbs)	9' 2" - 10 800	9' 2" - 10 140	9' 10" - 9 480	8' 2" - 11 020	8' 6" - 10 360
	13' 9" - 7 280	14' 1" - 6 830	14' 9" - 6 390	15' 5" - 5 730	15' 9" - 5 510
	19' 8" - 5 070	20' 0" - 4 850	20' 8" - 4 410	21' 4" - 3 970	21' 8" - 3 790
	-	26' 3" - 3 660	27' 3" - 3 400	27' 7" - 2 910	27' 11" - 2 730
	-	-	33' 10" - 2 650	34' 5" - 2 250	34' 9" - 2 070
	-	-	-	41' 8" - 1 810	42' 0" - 1 630
	-	-	-	-	49' 3" - 1 370
Slewing angle	415°	415°	415°	415°	415°
Height in folded position	88"	88"	88"	89"	91"
Width in folded position	98"	98"	98"	98"	98"
Installation space needed	30"	30"	34"	30"	34"
Weight - "standard" crane without stabilizers (lbs)	3 060	3 350	3 590	4 370	4 610
Weight - stabilizer equipment (lbs)	430 - 820	430 - 820	430 - 820	430 - 820	430 - 820

> HIAB XS 144 E-5 CLX



Disclaimer

Hiab cranes have been built to meet the highest standards of safety and service life and have been thoroughly tested. Strength calculations for this model have been carried out in accordance with EN13001. Hiab's certified Quality Assurance System complies with the ISO 9001. Some of the items in our literature may be extra equipment. Certain applications may require an official permit. We reserve the right to change technical specifications without prior notice. Hiab cranes produced for EU-countries are CE-marked and comply with the European Standard EN 12999.



Hiab is part of Cargotec Corporation

