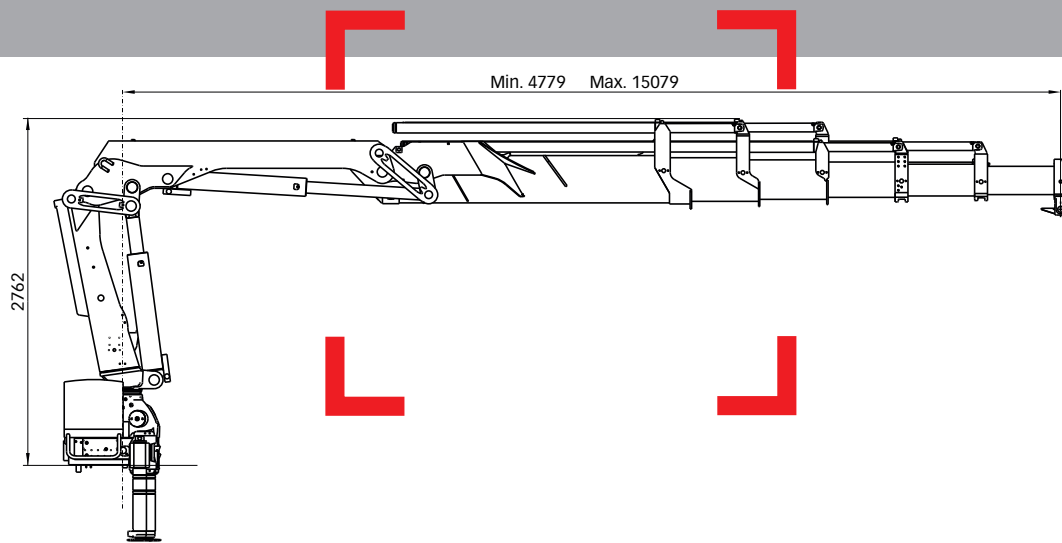


# HIAB XS 122 CLX Capacity 88,500 ft-lbs (12 tm)



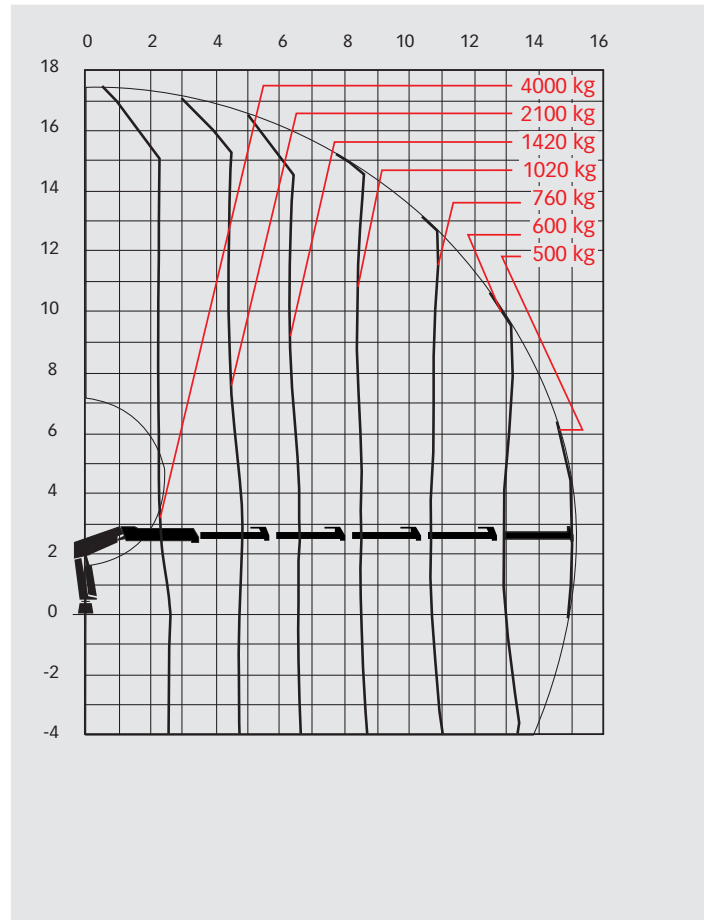
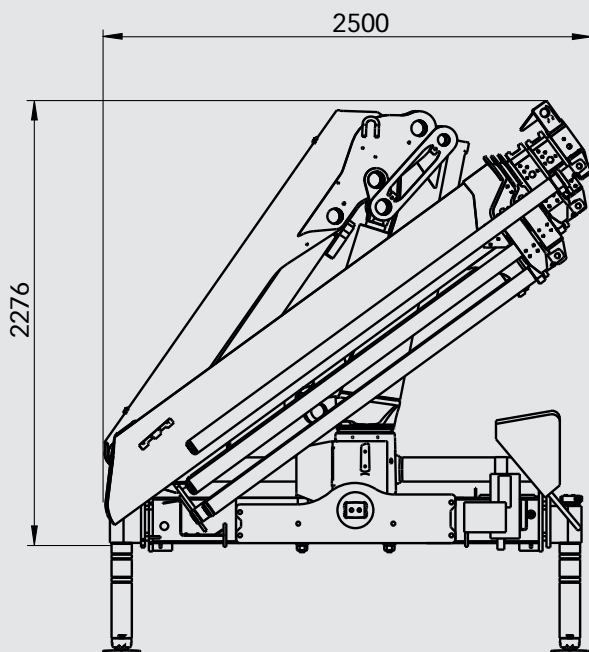
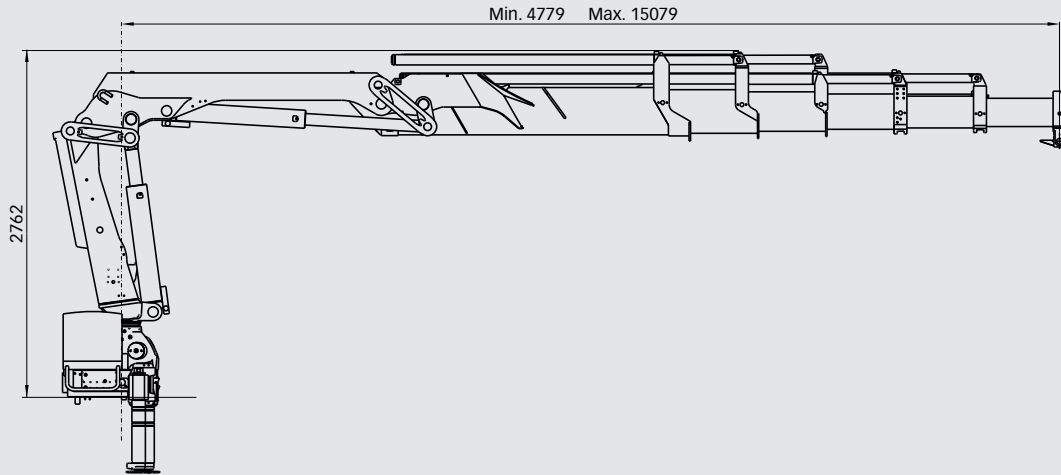
Basic data

# HIAB X5 122 CLX Basic data

Technical data	B-1 CLX	B-2 CLX	B-3 CLX	E-4 CLX	E-5 CLX
Max. lifting capacity (kNm)	120	113	110	101	99
Outreach - hydraulic extensions (m)	6.3	8.4	10.6	12.8	15.1
Outreach - manual extensions (m)	12.8	12.8	12.8	17.4	17.4
Outreach / lifting capacity (m / kg)	2.8 / 4300	2.8 / 4000	3.0 / 3700	2.4 / 4300	2.5 / 4000
	4.3 / 2800	4.4 / 2600	4.5 / 2500	4.7 / 2200	4.8 / 2100
	6.1 / 2000	6.2 / 1840	6.3 / 1720	6.5 / 1540	6.6 / 1420
	-	8.2 / 1400	8.3 / 1280	8.4 / 1120	8.5 / 1020
	-	-	10.3 / 1000	10.5 / 860	10.6 / 760
	-	-	-	12.7 / 700	12.8 / 600
	-	-	-	-	15.0 / 500
Slewing angle	415°	415°	415°	415°	415°
Height in folded position (mm)	2207	2208	2208	2231	2276
Width in folded position (mm)	2500	2500	2500	2500	2500
Installation space needed (mm)	773	773	861	770	854
Weight - "standard" crane without stabilizers (kg)	1290	1400	1520	1830	1920
Weight - stabilizer equipment (kg)	195 - 366	195 - 366	195 - 366	195 - 366	195 - 366

Technical data	B-1 CLX	B-2 CLX	B-3 CLX	E-4 CLX	E-5 CLX
Max. lifting capacity (ft-lbs)	88 490	83 350	81 110	74 530	73 010
Outreach - hydraulic extensions	20' 8"	27' 7"	34' 9"	42' 0"	49' 6"
Outreach - manual extensions	42' 0"	42' 0"	42' 0"	57' 1"	57' 1"
Outreach - lifting capacity (ft / lbs)	9' 2" / 9 480	9' 2" / 8 820	9' 10" / 8 160	7' 10" / 9 480	8' 2" / 8 820
	14' 1" / 6 170	14' 5" / 5 730	14' 9" / 5 510	15' 5" / 4 850	15' 9" / 4 630
	20' 0" / 4 410	20' 4" / 4 060	20' 8" / 3 790	21' 4" / 3 400	21' 8" / 3 130
	-	26' 11" / 3 090	27' 3" / 2 820	27' 7" / 2 470	27' 11" / 2 250
	-	-	33' 10" / 2 200	34' 5" / 1 900	34' 9" / 1 680
	-	-	-	41' 8" / 1 540	42' 0" / 1 320
	-	-	-	-	49' 3" / 1 100
Slewing angle	415°	415°	415°	415°	415°
Height in folded position	87"	87"	87"	88"	90"
Width in folded position	98"	98"	98"	98"	98"
Installation space needed	30"	30"	34"	30"	34"
Weight - "standard" crane without stabilizers (lbs)	2 840	3 090	3 350	4 030	4 230
Weight - stabilizer equipment (lbs)	430 - 810	430 - 810	430 - 810	430 - 810	430 - 810

> **HIAB XS 122 E-5 CLX**



**Disclaimer**

Hiab cranes have been built to meet the highest standards of safety and service life and have been thoroughly tested. Strength calculations for this model have been carried out in accordance with EN13001. Hiab's certified Quality Assurance System complies with the ISO 9001. Some of the items in our literature may be extra equipment. Certain applications may require an official permit. We reserve the right to change technical specifications without prior notice. Hiab cranes produced for EU-countries are CE-marked and comply with the European Standard EN 12999.



Hiab is part of Cargotec Corporation

