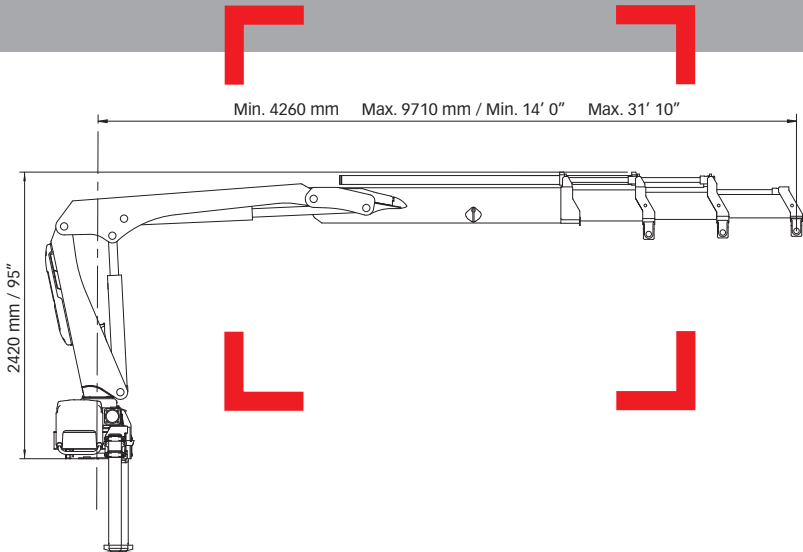


# HIAB XS 088 CLX Capacity 58,000 ft-lbs (8 tm)



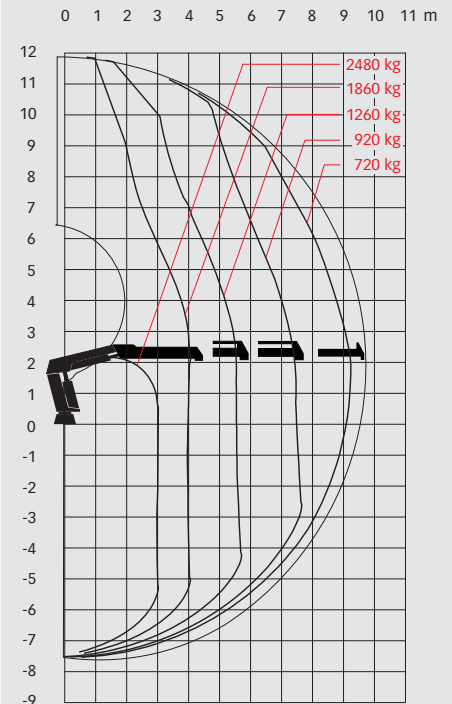
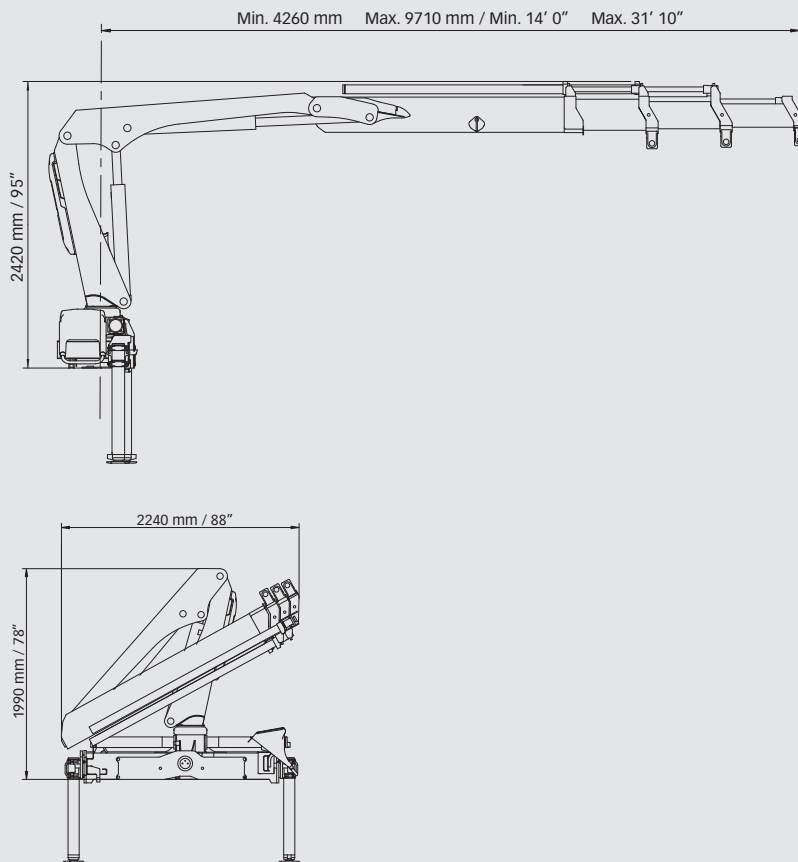
Basic data

# HIAB XS 088 CLX Basic data

## Technical data

	B-2 CLX	B-3 CLX		B-2 CLX	B-3 CLX
Max. lifting capacity (kNm)	78	75	(ft-lbs)	57880	54990
Outreach - hydraulic extensions (m)	7.7	9.7	-	25'3"	31'10"
Outreach - manual extensions (m)	11.3	11.3	-	37'1"	37'1"
Outreach / lifting capacity, standard (m / kg)	2.8 / 2820	3.1 / 2480	(ft - lbs)	9'2" - 6220	10'2" - 5470
	3.8 / 2020	3.9 / 1860		12'6" - 4450	12'10" - 4100
	5.4 / 1400	5.5 / 1260		17'9" - 3090	18'1" - 2780
	7.2 / 1040	7.3 / 920		23'7" - 2290	23'11" - 2030
	-	9.2 / 720	-	30'2" - 1590	
Slewing angle	400 - 406°	400 - 406°	-	400 - 406°	400 - 406°
Height in folded position (mm)	2000	2000	-	79"	79"
Width in folded position (mm)	2190	2240	-	86"	88"
Installation space needed (mm)	685	765	-	27"	30"
Weight - "standard" crane without stabilizers (kg)	1080	1170	(lbs)	2380	2580
Weight - stabilizer equipment (kg)	140 - 285	140 - 285	(lbs)	310 - 630	310 - 630

## HIAB XS 088 B-3 CLX



### Disclaimer

Hiab cranes have been built to meet the highest standards of safety and service life and have been thoroughly tested. Strength calculations for this model have been carried out in accordance with EN13001. Hiab's certified Quality Assurance System complies with the ISO 9001. Some of the items in our literature may be extra equipment. Certain applications may require an official permit. We reserve the right to change technical specifications without prior notice. Hiab cranes produced for EU-countries are CE-marked and comply with the European Standard EN 12999.