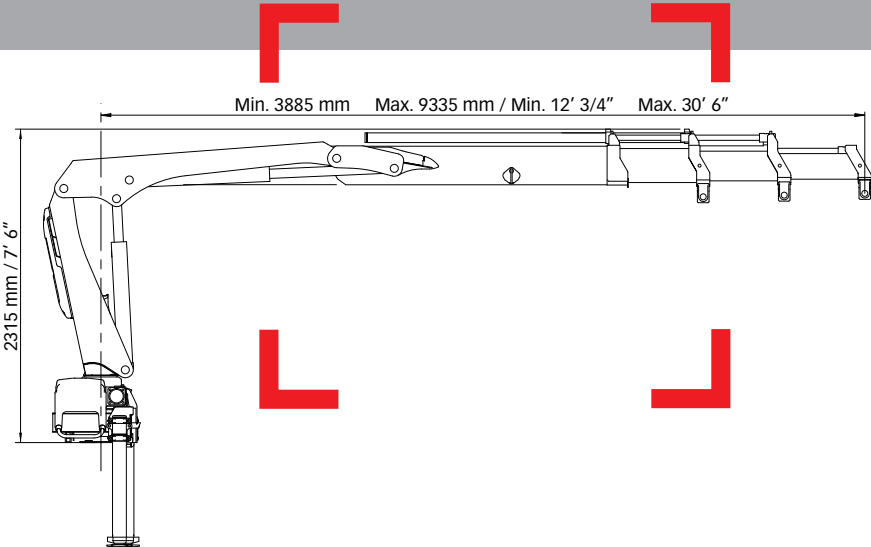


HIAB XS 077 Range 43,000-58,000 ft-lbs (6-8 tm)



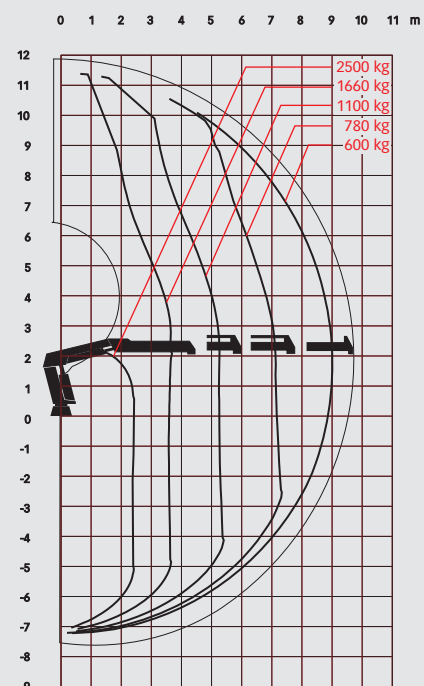
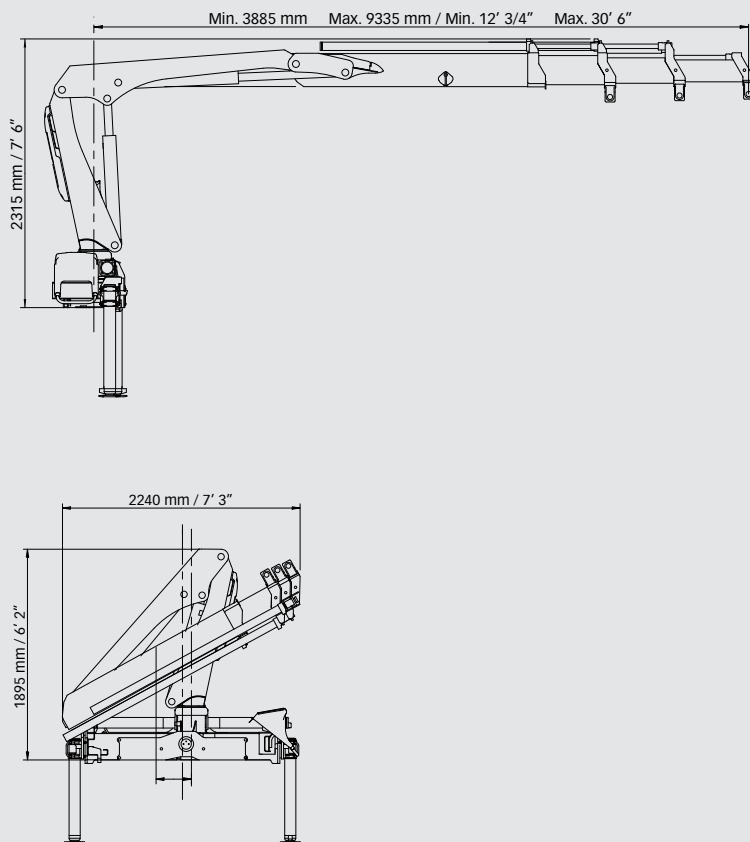
Basic data

HIAB XS 077 Basic data

Technical data

	BS-2 CL	BS-3 CL		BS-2 CL	BS-3 CL
Max. lifting capacity (kNm)	61	58	(ft-lbs)	44860	42690
Outreach - hydraulic extensions (m)	7.3	9.3	-	23'11"	30'6"
Outreach - manual extensions (m)	11.4	11.4	-	37'5"	37'1"
Outreach / Lifting capacity, standard (m / kg)	2.3 / 2700	2.4 / 2500	(ft - lbs)	7'7" - 5950	7'10" - 5510
	3.5 / 1780	3.6 / 1660		11'6" - 3920	11'10" - 3660
	5.1 / 1200	5.2 / 1100		16'9" - 2650	17'1" - 2430
	7.0 / 860	7.0 / 780		23' - 1900	23' - 1720
	-	8.9 / 600	-	29'2" - 1320	
Slewing angle	400 - 406°	400 - 406°	-	400 - 406°	400 - 406°
Height in folded position (mm)	1900	1900	-	75"	75"
Width in folded position (mm)	2190	2240	-	86"	88"
Installation space needed (mm)	685	745	-	27"	29"
Weight - "standard" crane without stabilizers (kg)	960	1050	(lbs)	2120	2310
Weight - stabilizer equipment (kg)	140 - 285	140 - 285	(lbs)	310 - 630	310 - 630

HIAB XS 077 BS-3 CL



Disclaimer

Hiab cranes have been built to meet the highest standards of safety and service life and have been thoroughly tested. Strength calculations for this model have been carried out in accordance with EN13001. Hiab's certified Quality Assurance System complies with the ISO 9001. Some of the items in our literature may be extra equipment. Certain applications may require an official permit. We reserve the right to change technical specifications without prior notice. Hiab cranes produced for EU-countries are CE-marked and comply with the European Standard EN 12999.