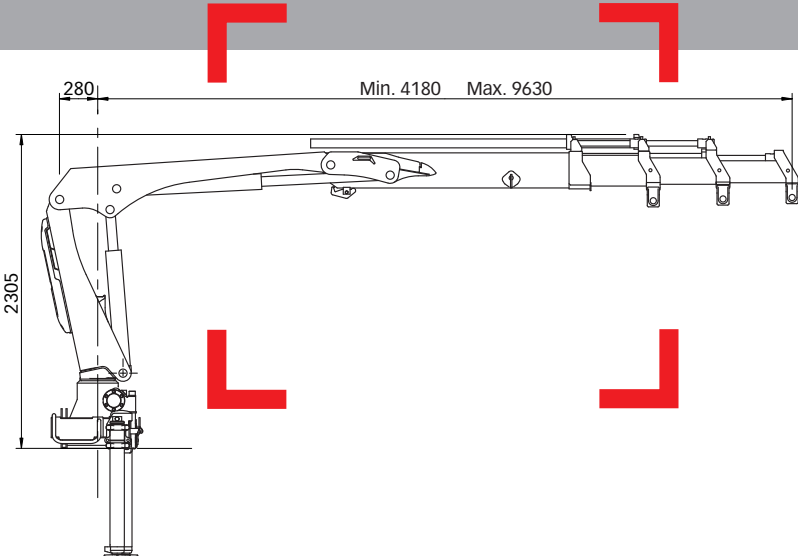


# HIAB XS 077 CLX Capacity 7 tm



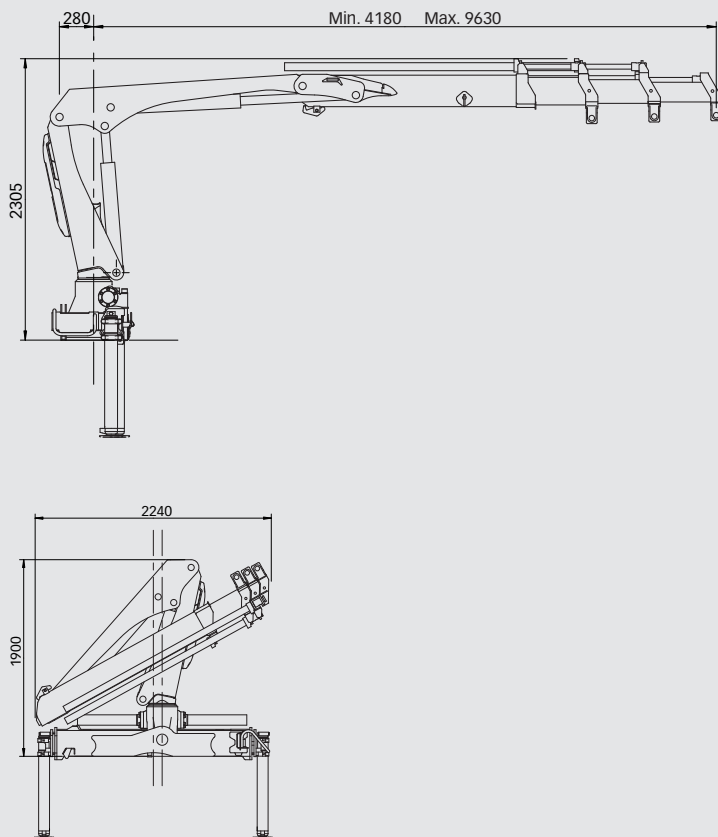
Basic data

# HIAB XS 077 CLX Basic data

## Technical data

	B-1 CLX	BS-2 CLX	B-2 CLX	BS-3 CLX	B-3 CLX
Max. lifting capacity (kNm)	69	66	65	63	63
Outreach - hydraulic extensions (m)	5.7	7.3	7.6	9.3	9.6
Outreach - manual extensions (m)	7.2 - 9.2	8.9 - 11.0	9.2 - 11.3	11.0	11.3
Outreach / Lifting capacity, standard (m / kg)	1.6 / 3450	1.6 / 3450	1.6 / 3400	1.6 / 3350	1.6 / 3350
	2.4 / 2920	2.1 / 3200	2.7 / 2520	2.1 / 3150	3.0 / 2200
	3.8 / 1880	3.5 / 1940	3.8 / 1780	3.5 / 1860	3.8 / 1700
	5.4 / 1320	5.1 / 1320	5.4 / 1220	5.1 / 1240	5.4 / 1140
	-	6.9 / 960	7.2 / 920	7.0 / 860	7.3 / 820
	-	-	-	8.9 / 680	9.2 / 640
Slewing angle	400 - 406°	400 - 406°	400 - 406°	400 - 406°	400 - 406°
Height in folded position (mm)	1900	1900	1900	1900	1900
Width in folded position - 2300 base (mm)	2300	2300	2300	2300	2300
Installation space needed (mm)	675	675	675	675	700
Weight - "standard" crane without stabilizers (kg)	875	960	970	1050	1060
Weight - stabilizer equipment (kg)	135 - 205	135 - 205	135 - 205	135 - 205	135 - 205

## HIAB XS 077 B-3 CLX



### Disclaimer

Hiab cranes have been built to meet the highest standards of safety and service life and have been thoroughly tested. Strength calculations for this model have been carried out in accordance with EN13001. Hiab's certified Quality Assurance System complies with the ISO 9001. Some of the items in our literature may be extra equipment. Certain applications may require an official permit. We reserve the right to change technical specifications without prior notice. Hiab cranes produced for EU-countries are CE-marked and comply with the European Standard EN 12999.