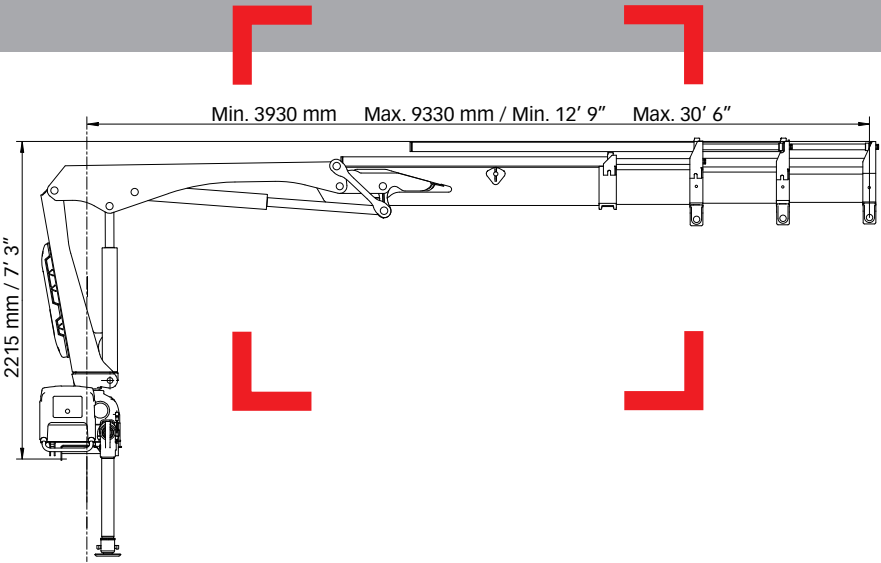


HIAB XS 055 Range 29,000-43,000 ft-lbs (4-6 tm)



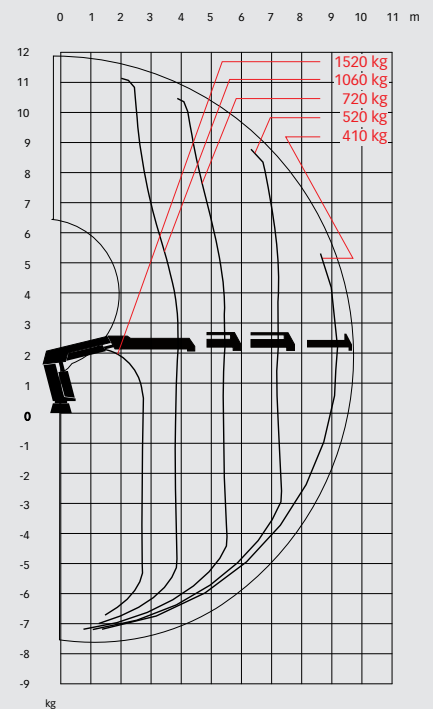
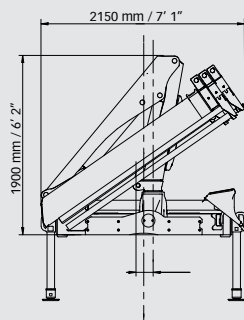
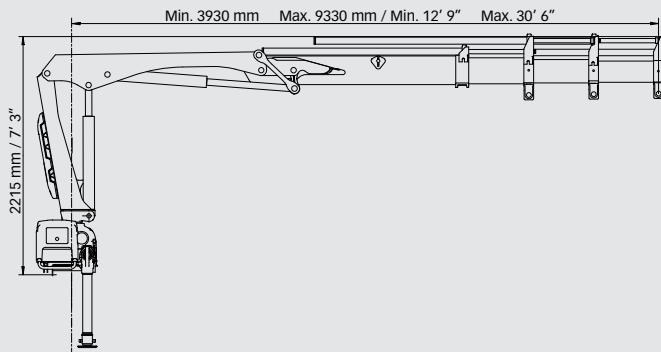
Basic data

HIAB XS 055 Basic data

Technical data

	D-2 CL	D-3 CL		D-2 CL	D-3 CL
Max. lifting capacity (kNm)	44	42	(ft-lbs)	32560	31110
Outreach - hydraulic extensions (m)	7.3	9.3	-	23'11"	30'6"
Outreach manual extensions	11.3 m	11.3 m	-	37'1"	37'1"
Outreach / lifting capacity, standard (m / kg)	2.5 / 1760	2.9 / 1520	(ft - lbs)	8'2" - 3880	9'6" - 3350
	3.9 / 1140	4.0 / 1060		12'10" - 2510	13'1" - 2340
	5.4 / 800	5.5 / 740		17'9" - 1760	18'1" - 1630
	7.2 / 600	7.3 / 520		23'7" - 1320	23'11" - 1150
	-	9.3 / 410	-	30'6" - 900	
Slewing angle	410°	410°	-	410°	410°
Height in folded position (mm)	1900	1900	-	75"	75"
Width in folded position (mm)	2015	2150	-	79"	85"
Installation space needed (mm)	650	650	-	26"	26"
Weight - "standard" crane without stabilizers (kg)	820	880	(lbs)	1810	1940
Weight - stabilizer equipment (kg)	105 - 160	105 - 160	(lbs)	230 - 350	230 - 350

HIAB XS 055 D-3 CL



Disclaimer

Hiab cranes have been built to meet the highest standards of safety and service life and have been thoroughly tested. Strength calculations for this model have been carried out in accordance with EN13001. Hiab's certified Quality Assurance System complies with the ISO 9001. Some of the items in our literature may be extra equipment. Certain applications may require an official permit. We reserve the right to change technical specifications without prior notice. Hiab cranes produced for EU-countries are CE-marked and comply with the European Standard EN 12999.