



MULTILIFT

LHT 150 Hooklift



Technical Data		LHT 150.36	LHT 150.41	LHT 150.46	LHT 150.51
Vehicle type		2 axle	2 axle	2 axle	2 axle
Gross vehicle weight (GVW)	(lbs)	27,000- 30,000	27,000- 30,000	27,000- 30,000	27,000- 30,000
Maximum capacity					
-loading *	(lbs)	22,000	22,000	22,000	22,000
-tipping **	(lbs)	22,000	22,000	22,000	22,000
Max. Dumping angle	(°)	50	50	50	50
Weight of equipment installed ***	(lbs)	2866	2976	2998	3197
Hydraulic system working pressure, max.	(PSI)	4400	4400	4400	4400
Recommended oil flow	(GPM)	10.6	10.6	10.6	10.6
Oil tank volume	(gallon)	13.2	13.2	13.2	13.2
Operation time/ phase, theoretical (10.6 GPM) (s)		30-55	30-55	30-55	30-55
- tipping cycle/loading cycle/unloading cycle					

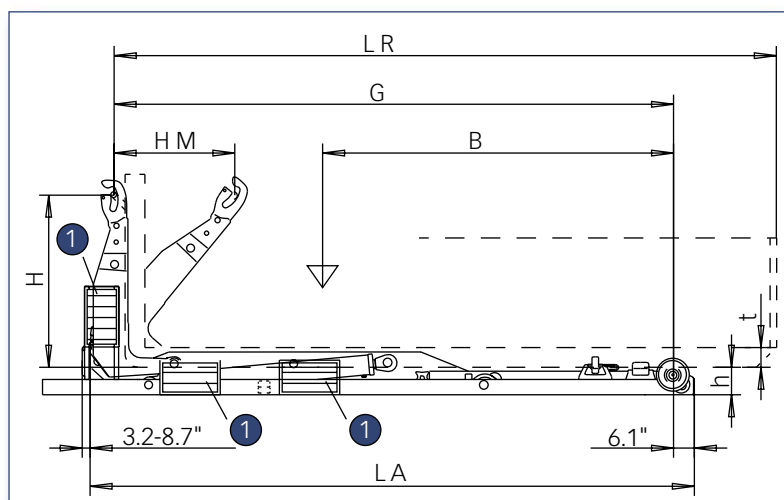
* Gripping height 61.8", chassis height approx. 39.3".

** Rear overhang 23.6". *** Installed assembly weight includes oil tank and oil.

LHT 150 Series: Hook Assembly with tilting horizontal movement

Multilift Star advantages

- ★ low installation height
- ★ user friendly
- ★ versatile safety functions
- ★ unique control accuracy
- ★ quick tipping and body changing
- ★ low operational costs
- ★ optimal construction - high nett payloads
- ★ automatic tipping frame and subframe locking
- ★ high resale value



1 optional position of control valve

Primary dimensions		LHT 150.36	LHT 150.41	LHT 150.46	LHT 150.51
LR = body length	(ft)	9.8-	11.2-	12.1-	13.7-
	(ft)	16.0	17.7	19.3	21.0
LA = installation length	(inches)	161.4	181.1	200.8	220.5
B = center of gravity	(inches)	84.6	96.5	108.3	126.0
G = equipment length	(inches)	141.7	161.4	181.1	200.8
HM = horizontal movement	(inches)	31.5	35.4	43.3	43.3
h = installation height	(inches)	7.5	7.5	7.5	7.5
t = tunnel height (container)	(inches)	5.9	5.9	5.9	5.9
H = gripping height	(inches)	61.8	61.8	61.8	61.8

With the shortest container length tipping capability is limited

Safe to buy, easy to use, high resale value



Multilift equipments fulfill the demands set forth in EU directives and are CE approved.

Steel structures

- balanced high-quality robot welds
- castings used in high stress areas
 - long use, light, rigid

Hydraulics (Patent pending)

- ingenious control system
 - two speed operation
 - unique control accuracy
- main cylinder flotation
 - tipping frame with soft stop
 - improved operator comfort
- safety interlocks guarantee safe operation on hydraulics
- compact and secure JIC connectors on hydraulics

Body locking

- hydraulic outside
- hydraulic inside
- mechanical

Accessories

- Auto-hook
- bogie blocking
- fast speed option
- rear stabilizer roller
- additional hydraulic functions

Note!

All imperial sizes are calculated from Metric sizes! Under our policy of continual product improvement, we reserve the right to change dimensions and/or technical specifications without prior notice.